

Notes

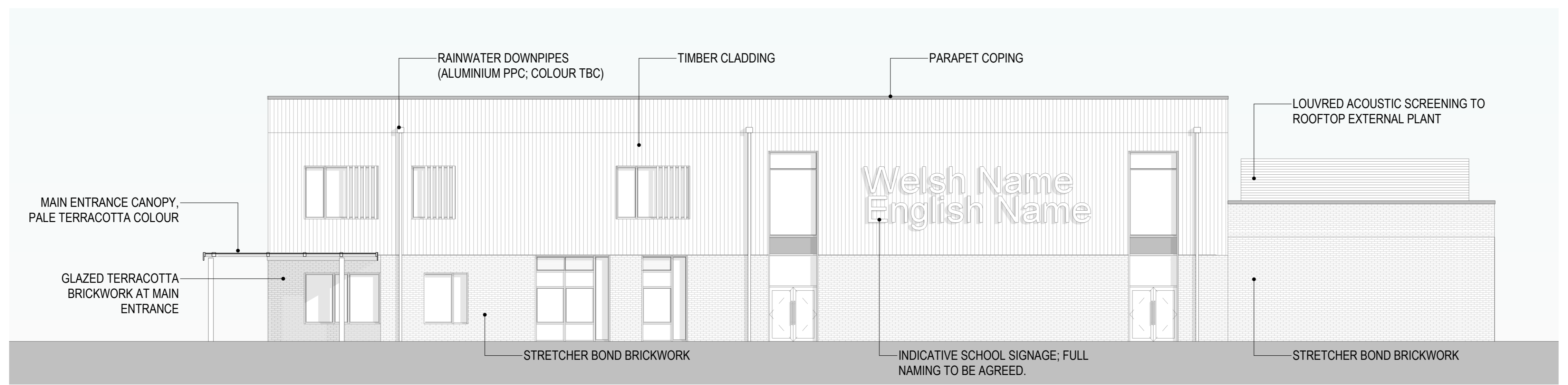
- This drawing is copyright
- It is to be read in conjunction with all other relevant drawings
- Do not modify any element of this drawing
- Use dimensions only to approved extent
- This drawing may contain colour

Scale bar: 0 5m 10m 15m

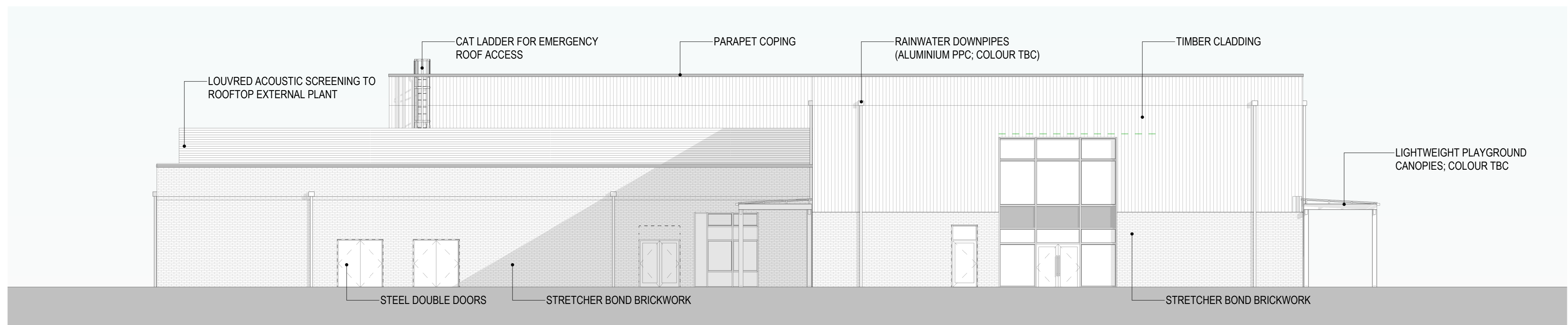
Scale: 1:100



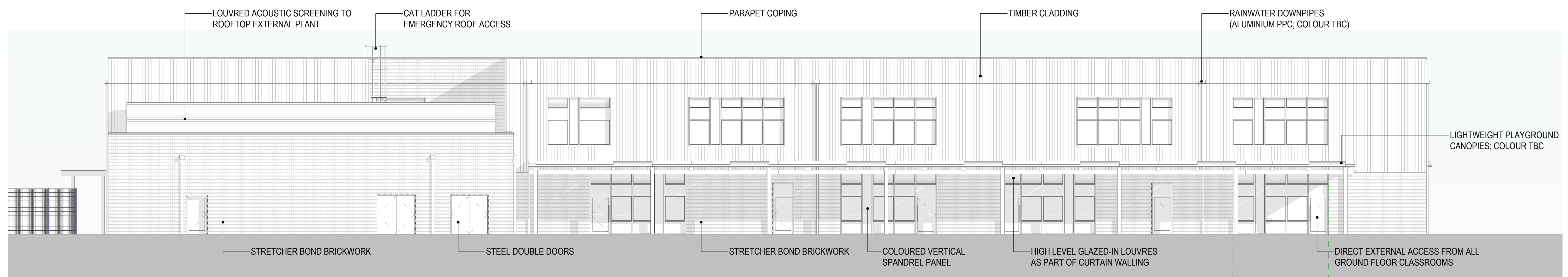
NORTH-WEST ELEVATION
1:100



SOUTH-WEST ELEVATION
1:100



NORTH-EAST ELEVATION
1:100



SOUTH-EAST ELEVATION
1:100

ELEVATIONS MATERIAL KEY

	TIMBER CLADDING AT FIRST FLOOR
	TRADITIONAL BRICKWORK IN STRETCHER BOND (BUFF MULTI-BRICK) AT GROUND FLOOR
	GLAZED BRICKWORK IN STRETCHER BOND (PALE TERRACOTTA MULTI-BRICK) AT MAIN ENTRANCE
	LOUVRED ACOUSTIC SCREENING TO ROOFTOP EXTERNAL PLANT

Please note:

1. All material selections subject to Planning Advice
2. Rainwater Strategy under development and review, to be finalised during RIBA Stage 3
3. Proposed landscaping (new trees etc) have been omitted for clarity

PO1	06/12/2024	First issue for RAC	VS	CF
Drawn By	VS	Checked By	CF	Drawn Review



Project: Pysyfein Primary School

Drawing Title: PROPOSED ELEVATIONS

Job Number	Date	Security Classification	Drawn By
144724	03/12/2024		VS
Scale/BA	Purpose	Reviewed By	
As indicated	FOR PLANNING	CF	
Drawing Number	Revision		
PYF-ARC-XX-XX-EL-A-250110			P01