

SURFACE LEVEL DATA				
NUMBER	MINIMUM LEVEL	MAXIMUM LEVEL	COLOUR	AREA
1	-0.56	0.00	Red	3729m ²
2	0.00	1.00	Orange	4533m ²
3	1.00	2.00	Yellow	1675m ²
4	2.00	3.00	Light Green	301m ²
5	3.00	3.32	Dark Green	4m ²

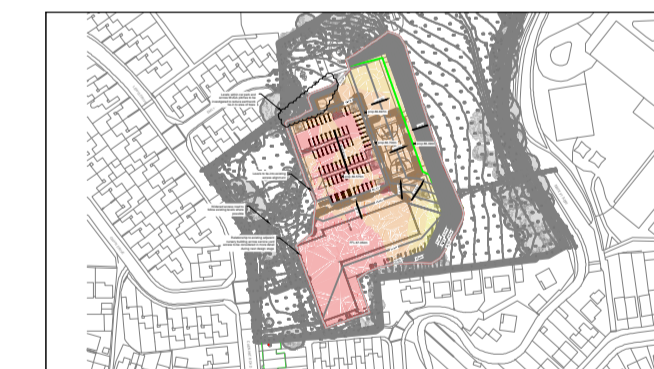
Gross cut	1447m ³
Gross fill	3928m ³
Net Fill	2481m ³

Site area - 10253m ²
Site clearance - 2051m ³ (200mm thick)

- Formation level used in assessment based on nominal 650mm construction for building and earthworks
- A nominal 200mm strip has been assumed for site clearance
- Volumes based on a comparison between formation levels and site clearance levels.

AECOM
 The Colmore Building
 Colmore Circus Queensway
 Birmingham
 B4 6AT
 T +44 (0)121 212 3035
 www.aecom.com

- Existing site levels based on topographic survey undertaken by Zenith Surveys Ltd (ref 21716_A, dated May 2022)
- Proposed site plan based on Revit model by Arcadis, drawing ref 144724_ARC-ZZ-M3-A-250-001, received 18/11/2024
- Site volumes are based on current assumptions:
 - Site strip thickness of 200mm
 - Average construction thickness of 500mm
- No allowance has been included for arisings generated by excavations for service trenches or foundations
- Volumes assume that all excavated material is suitable for reuse as general fill material
- Typical earthworks slopes indicated at gradient of 1:3
- Consideration to be given to root protection areas of existing trees
- Car park and MUGA construction assumed to be permeable. No gradients allowed at this stage due to unknown service routing and depths



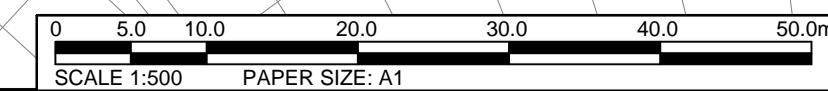
IR	DATE	DESCRIPTION	BY	CHK	APP
P01	12/12/23	Stage 2 issue	DN	DM	MBB
P02	06/12/24	Updated for PAC	AB	DM	CLP

SO - Initial Status

60741299

Indicative contour levels & earthwork volumes

PYF-ACM-XX-XX-DR-C-100001



This drawing has been prepared for the use of AECOM's client. It may not be used, modified, reproduced or relied upon by third parties, except as agreed by AECOM or as required by law. AECOM accepts no responsibility, and denies any liability, whatsoever, to any party that uses or relies on this drawing without AECOM's express written consent. Do not scale this document. All measurements must be obtained from the stated dimensions.