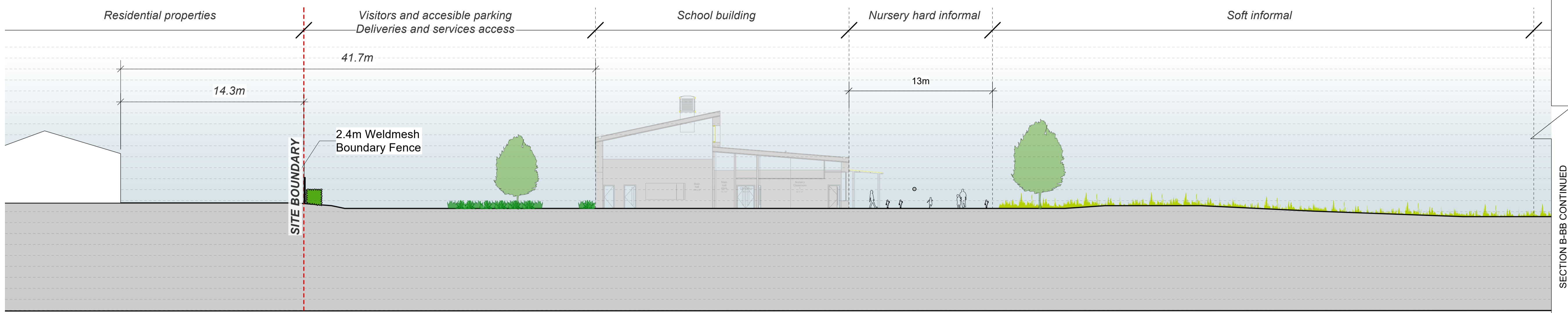
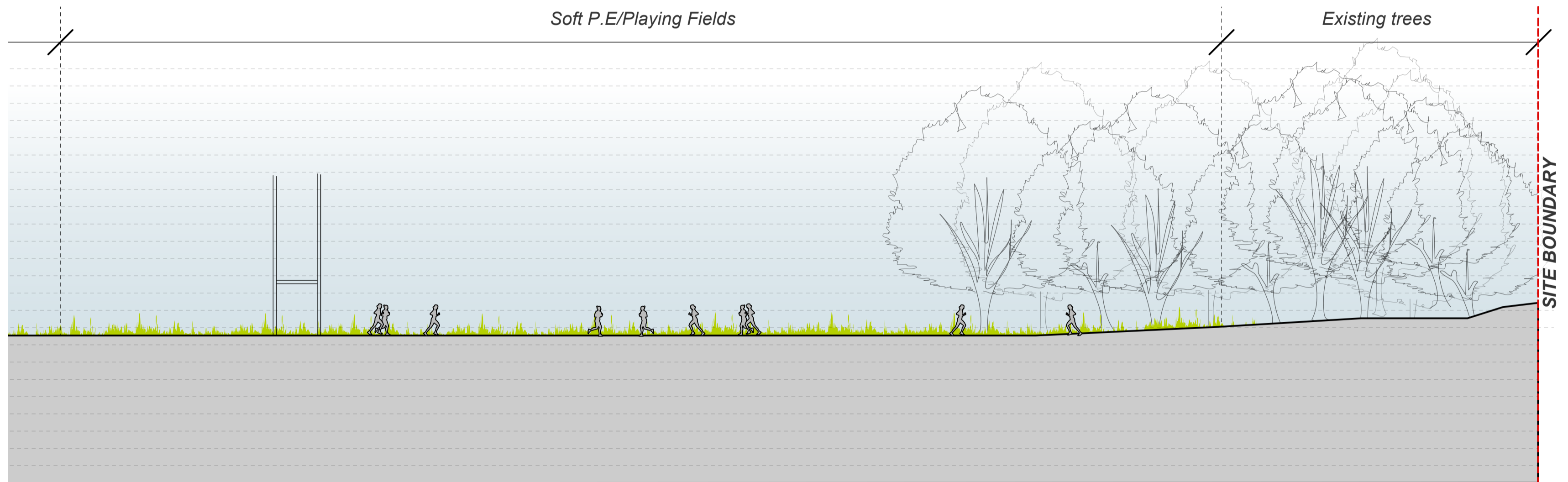


**Note**  
 1. Do not scale from this drawing  
 2. To be read in conjunction with Project Risk Register REF: XXX  
 3. To be read in conjunction with all other Landscape Architect's drawings

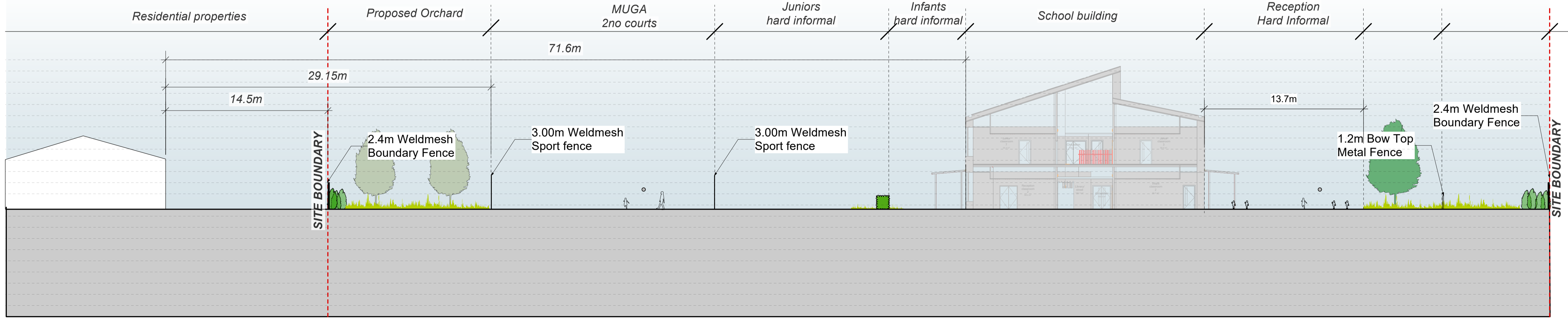
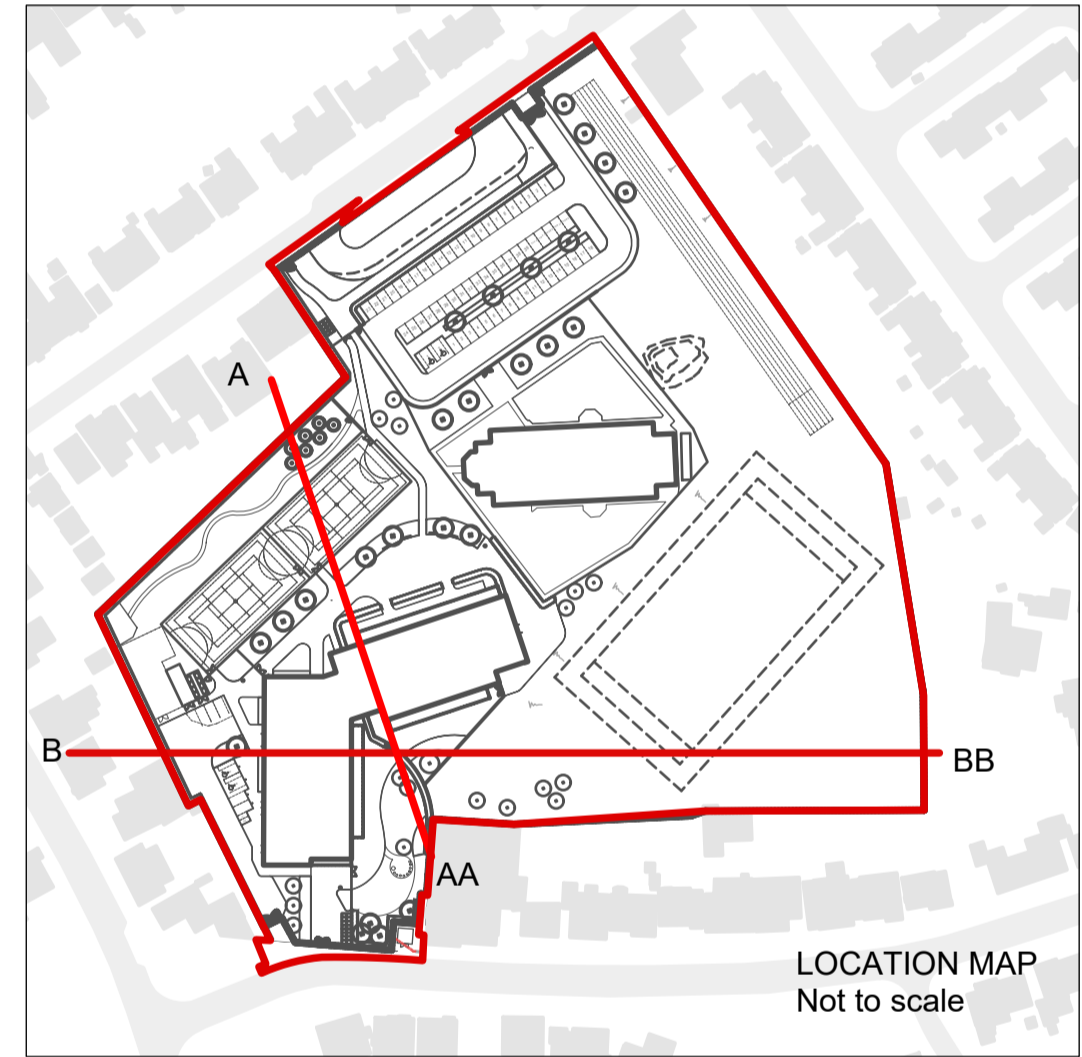
**KEY**



SECTION B-BB



SECTION B-BB continued



SECTION A-AA

ID	RISK	MITIGATION	DATE MITIGATED
<b>RESIDUAL PROJECT RISKS</b>			

DATE	REV	DESCRIPTION OF REVISION	DRAWN BY	APPROVED BY
27/09/2023	P01	Issued for PAC	LS	

**REVISIONS**

STATUS  
**S3 - FOR PLANNING**

**ares**  
 LANDSCAPE ARCHITECTS

Ares Landscape Architects LTD  
 Gatecrasher,  
 51 Eyre Lane  
 Sheffield  
 S1 4RS  
 t: 0114 276 2000  
 e: hello@aresdesign.co.uk  
 w: ares.eu.com

CLIENT:  
**Sheppard Robson**

PROJECT TITLE:  
**Bridgend Primary Schools - Corneli Site**

DRAWING TITLE:  
**Site Sections**

DRAWING SCALE: 1:200  
 PAPER SIZE: A1

DRAWN BY: KP  
 APPROVED BY: LS

DRAWN DATE: 25/07/2022  
 ALA PROJECT CODE: ALA735

DRAWING NUMBER: **BR0201-ALA-00-ZZ-DR-L-20004** S3 P01

STATUS: **S3** REVISION: **P01**