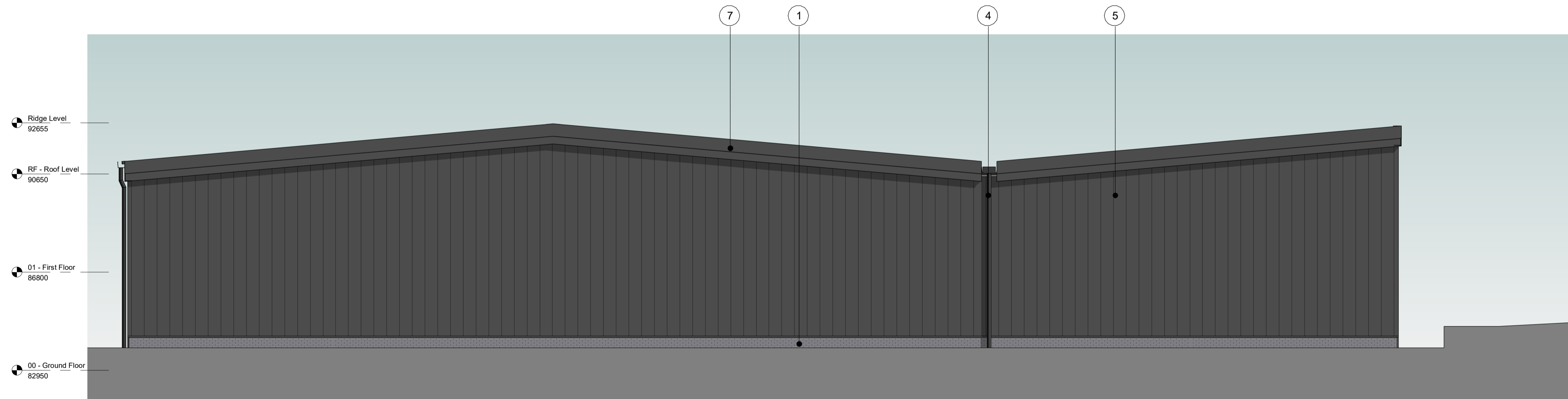
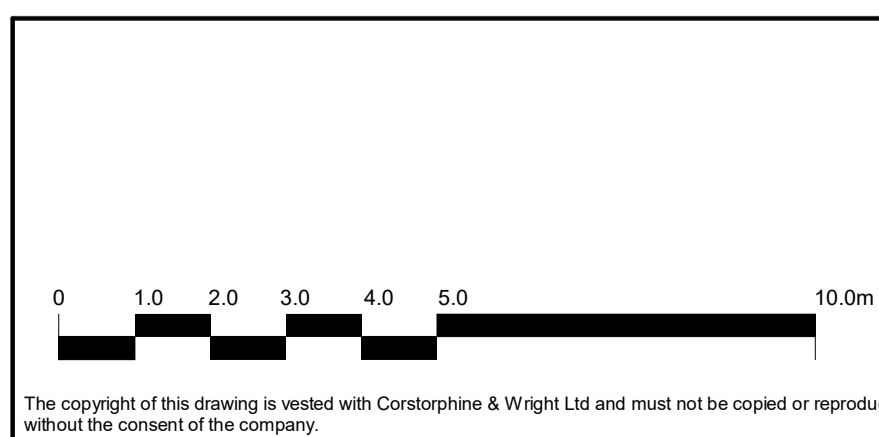


A Proposed West Elevation A
1 : 100



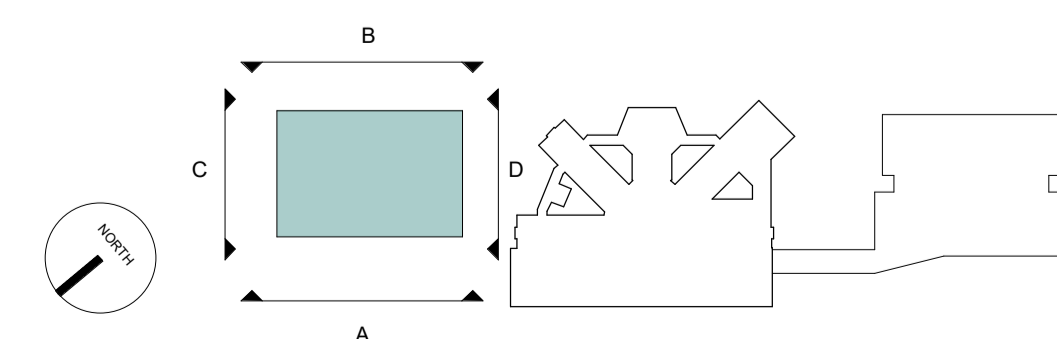
B Proposed East Elevation B
1 : 100

MATERIAL SCHEDULE	
1	Facing Brickwork - Blue/Grey
2	PPC Aluminium Curtian Walling - Dark Grey
3	PPC Aluminium Louvres - Dark Grey (RAL TBC)
4	PPC Aluminium Rainwater Goods - Dark Grey (RAL TBC)
5	Dark Grey Aluminium Built Up Cladding - Dark Grey (RAL TBC) - Euroclad Vieo
6	Metal Roller Shutter Door
7	PPC Aluminium Flashing - Dark Grey
8	PPC Aluminium Door - Dark Grey
9	Dark grey built up roof



P-02 Issue for pack PAC
P-01 First Issue

18.08.23 EHC is
02.05.2023 EHC SS
Date Draw. Chk.



Client:
Wilmot Dixon Construction Ltd

Project:
Gwent Police Operational Facility

Drawing Title:
Fleet - Proposed Elevation - Sheet 1

Drawing Status:
PLANNING

Corstorphine & Wright

Warwick Studio
Brook Hall, Brook Street, Warwick, CV34 4BL
01926 659 444
corstorphine-wright.com

Drawing No. GPOF-CWA-03-XX-DR-A-0360				Revision P-02
Drawn is	Checked EHC	Paper Size A1	Scale 1 : 100	Date 07/19/23