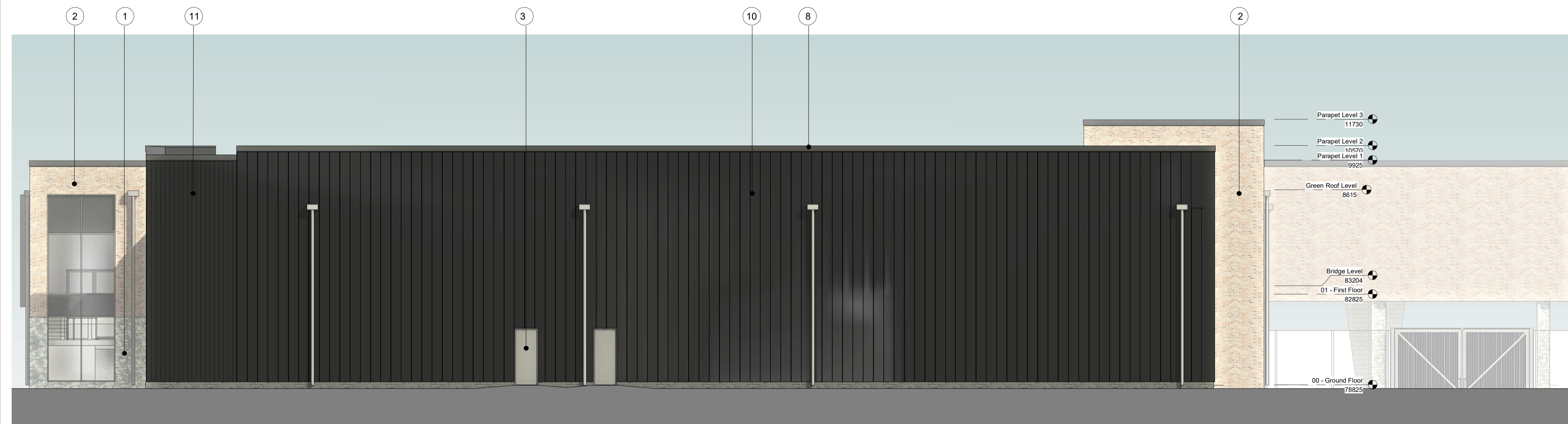


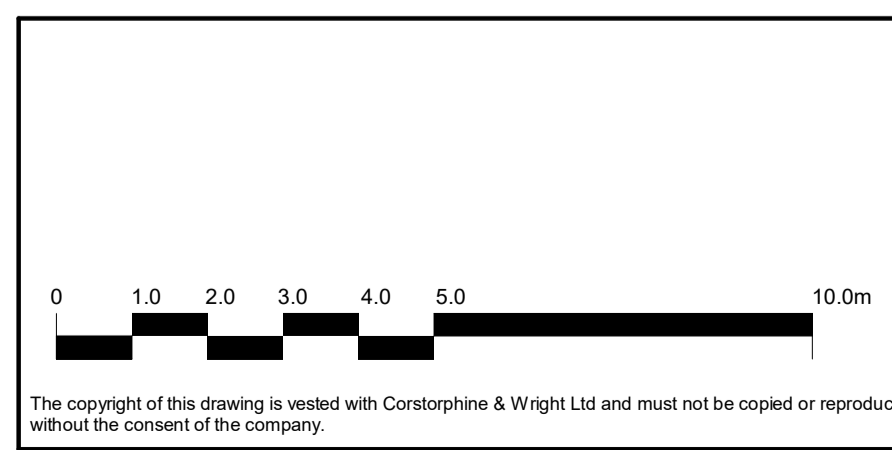


A Proposed East Elevation A
1 : 100

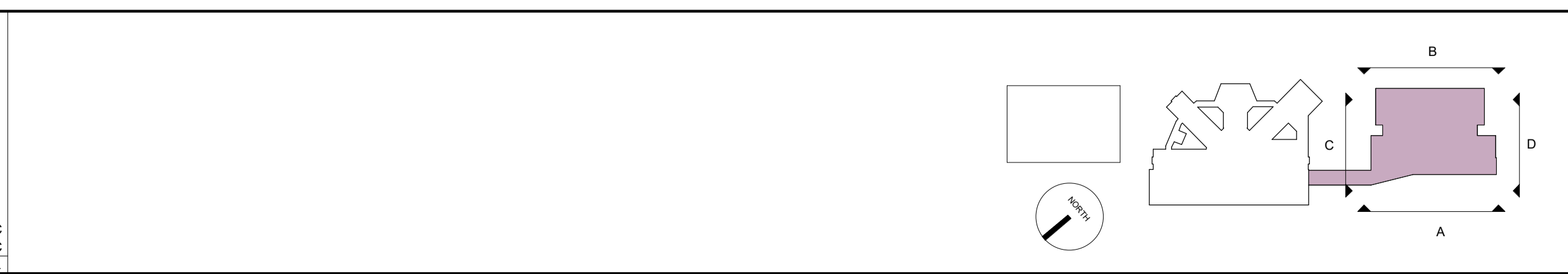


B Proposed West Elevation B
1 : 100

MATERIAL SCHEDULE	
1	Slate Cladding - Nordic Dark
2	Facing Brickwork - Colour TBC
3	PPC Aluminium Door - Dark Grey
4	PPC Aluminium Curtain Walling - Dark Grey
5	Bi-Parting PPC Aluminium Doors
6	PPC Aluminium Louvres - Dark Grey (RAL TBC)
7	PPC Aluminium Flashing - Dark Grey (RAL TBC)
8	PPC Aluminium Parapet Capping - Dark Grey (RAL TBC)
9	PPC Aluminium Rainwater Goods - Dark Grey (RAL TBC)
10	Dark Grey Aluminium Built Up Cladding - Dark Grey (RAL TBC) - Euroclad Vieo
11	Dark Grey Aluminium Built Up Cladding - Dark Grey (RAL TBC) - Euroclad Opus
12	Metal Roller Shutter Door



P-02	Issue for pack PAC	18.08.2023	is	EHC
P-01	First issue	02.05.2023	SS	EHC
Rev.	Description	Date	Draw.	CHK.



Client: Willmott Dixon Construction Ltd.

Project: Gwent Police Operational Facility

Drawing Title: Training - Proposed Elevation - Sheet 1

Drawing Status: PLANNING

Warwick Studio
Brook Hall, Brook Street, Warwick, CV34 4BL
01926 659 444
corstorphine-wright.com

Drawing No. GPOF-CWA-02-XX-DR-A-0355

Revision P-02

Drawn	Checked	Paper Size	Scale	Date
SS	EHC	A1	1 : 100	17/04/23