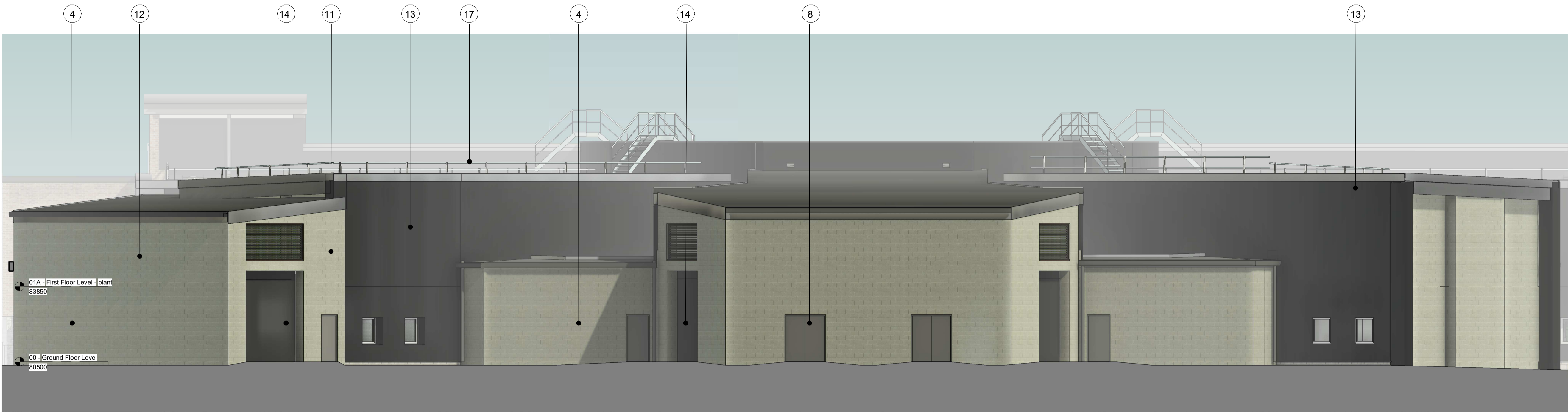
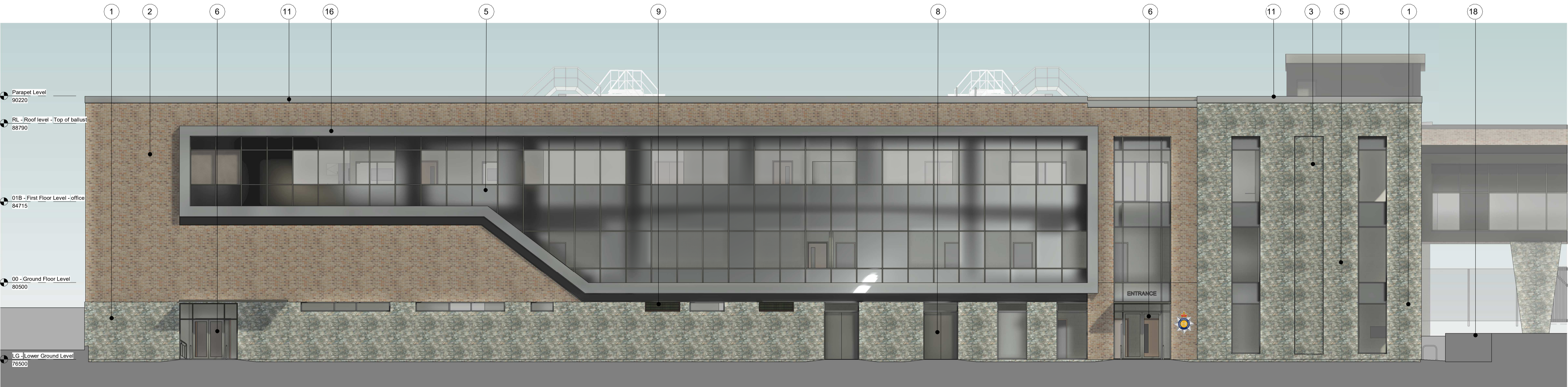


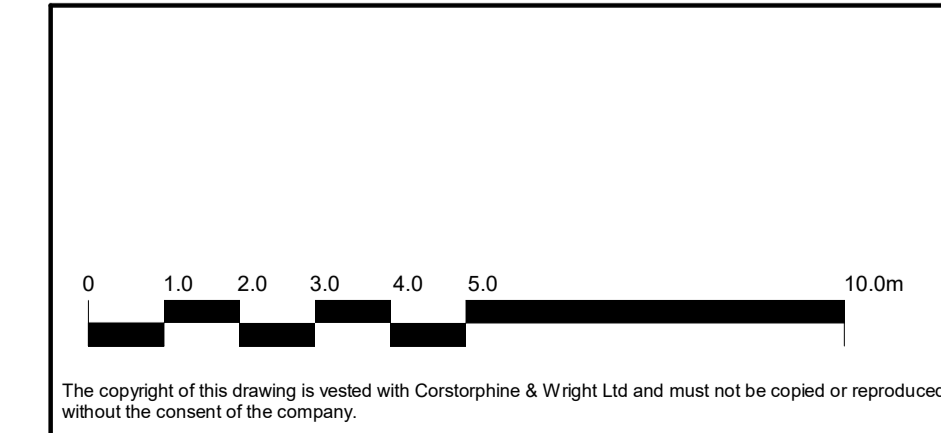
MATERIAL SCHEDULE	
1	Slate Cladding - Nordic Dark
2	Facing Brickwork - Colour TBC
3	Recessed Slate Cladding - Nordic Dark with brushed stainless steel angle trim
4	Fairface Blockwork - Pewter
5	PPC Aluminium Curtain Walling - Dark Grey (RAL TBC) with ceramic backed spandrel panels
6	PPC Aluminium Framed Automatic Glazed Doors
7	PPC Aluminium Louvred Doors
8	PPC Aluminium Door
9	PPC Aluminium Louvres - Dark Grey (RAL TBC)
10	PPC Aluminium Flashing - Dark Grey (RAL TBC)
11	PPC Aluminium Parapet Capping - Dark Grey (RAL TBC)
12	PPC Aluminium Rainwater Goods - Dark Grey (RAL TBC)
13	Dark Grey Aluminium Built up Vertical Cladding - Dark Grey - Profile TBC
14	Metal Roller Shutter Door - Grey
15	Suntubes
16	Projecting aluminium box flashing - Dark Grey
17	Freestanding safety railings
18	Retaining wall



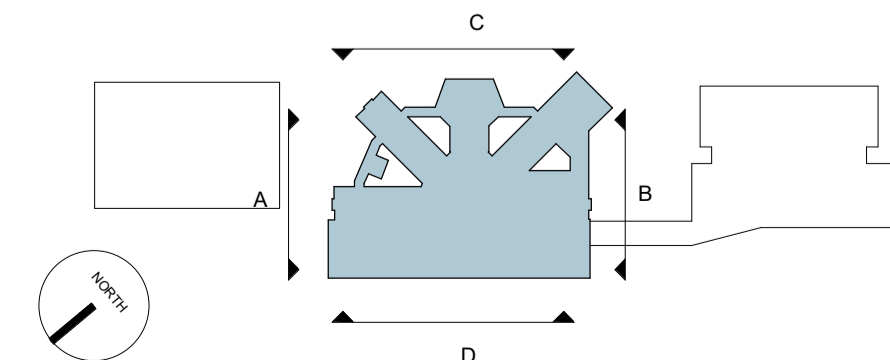
C Proposed East Elevation C
1:100



D Proposed West Elevation D
1:100



P-02	Issue pack for PAC	17.08.2023	is	EHC
P-01	First issue	02.05.2023	SS	EHC
Rev.	Description	Date	Draw.	CHK.



Client: Willmott Dixon Construction Ltd.

Project: Gwent Police Operational Facility

Drawing Title: Police Hub - Proposed Elevations - Sheet 2

Drawing Status: PLANNING

Warwick Studio
Brook Hall, Brook Street, Warwick, CV34 4BL
01926 650 444
corstorphine-wright.com

Drawing No. GPOF-CWA-01-XX-DR-A-0351

Revision P-02

Drawn	Checked	Paper Size	Scale	Date
SS	EHC	A1	1:100	17/04/23