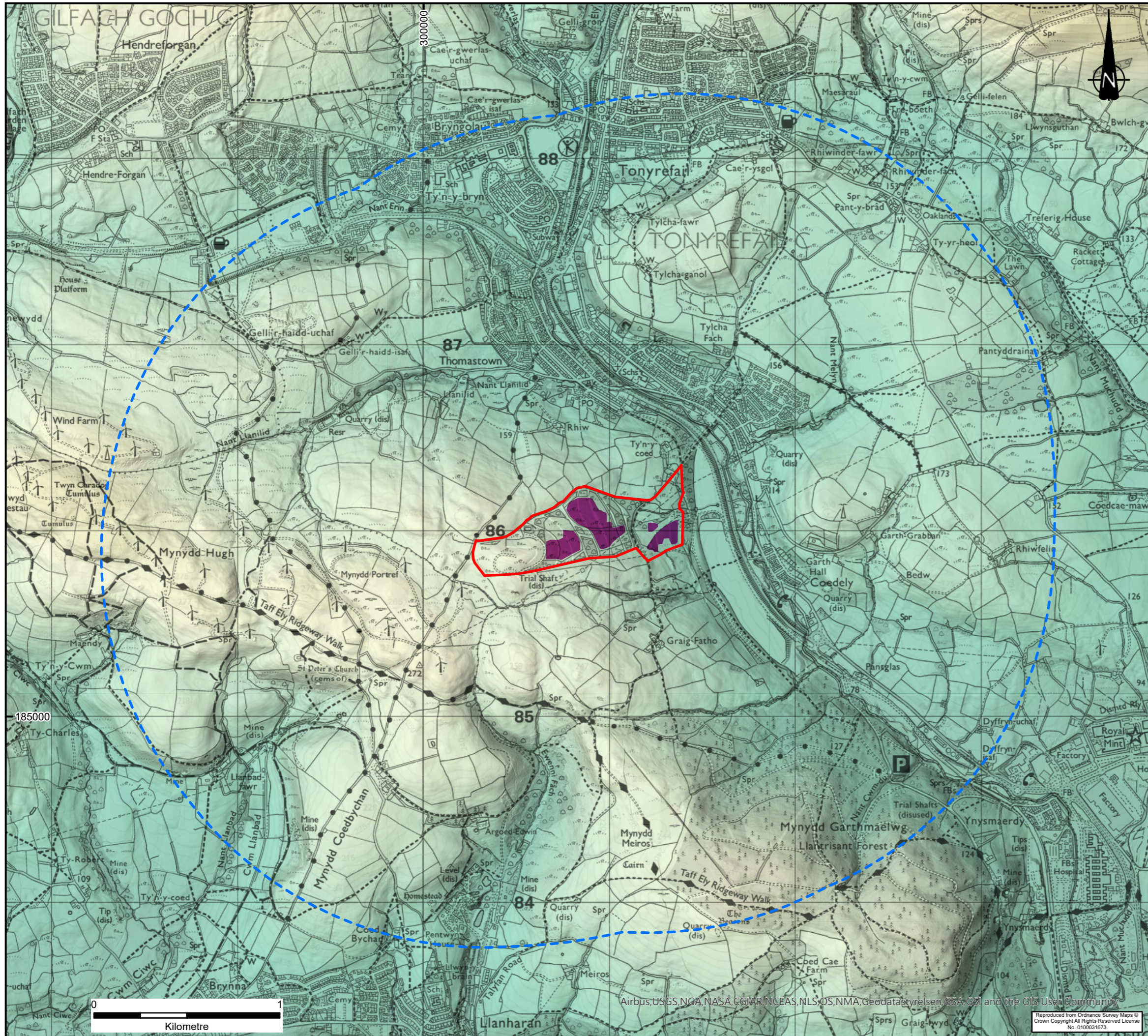


FIGURES



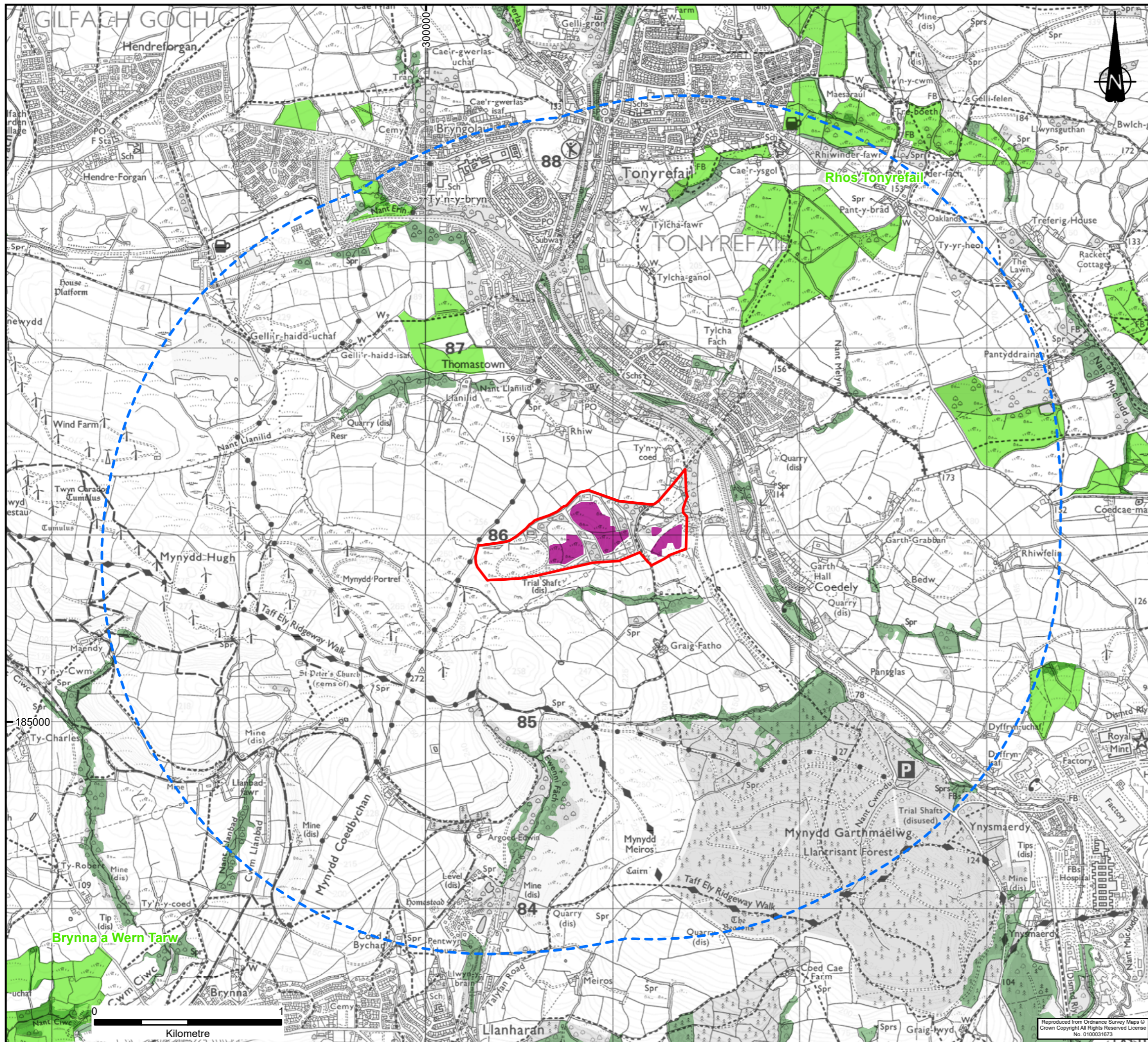
KEY

- Site Boundary
 - 2 km Buffer
 - Solar Array Areas
- Terrain
- 520 mAOD
 - 0 mAOD

Notes:

Boundaries are indicative.

REVISION	DETAILS	DATE	DRAWN	CHKD	APPD
CLIENT					
RHONDDA CYNON TAF COUNTY BOROUGH COUNCIL					
PROJECT					
COED-ELY SOLAR FARM					
DRAWING TITLE					
FIGURE 001 TOPOGRAPHY					
DRG No.	CA12727/FIGURE001	REV	A		
DRG SIZE	A3	SCALE	1:20,000	DATE	14/06/2023
DRAWN BY	SRW	CHECKED BY	JW	APPROVED BY	LG



KEY

- Site Boundary
- 2 km Buffer
- Solar Array Areas
- Site of Special Scientific Interest
- Ancient Woodland

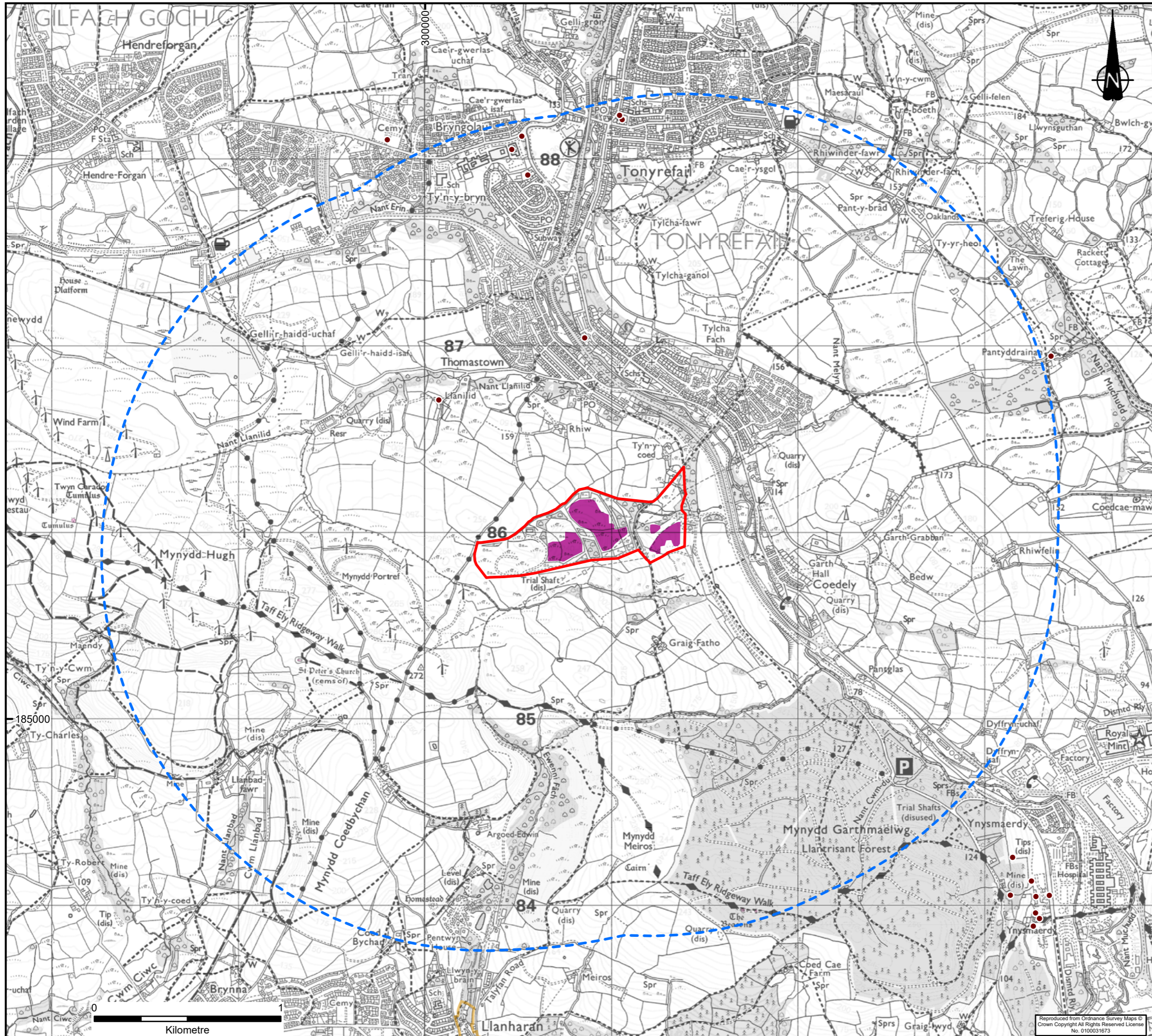


Notes:

Boundaries are indicative.
 © Natural Resources Wales. All rights reserved. Crown Copyright and Database Right 2023.

REVISION	DETAILS	DATE	DRAWN	CHKD	APPD
CLIENT					
RHONDDA CYNON TAF COUNTY BOROUGH COUNCIL					
PROJECT					
COED-ELY SOLAR FARM					
DRAWING TITLE					
FIGURE 002 DESIGNATED AREAS					
DRG No.	CA12727/FIGURE002	REV	A		
DRG SIZE	A3	SCALE	1:20,000	DATE	14/06/2023
DRAWN BY	SRW	CHECKED BY	JW	APPROVED BY	LG





KEY

- Site Boundary
- 2 km Buffer
- Solar Array Areas

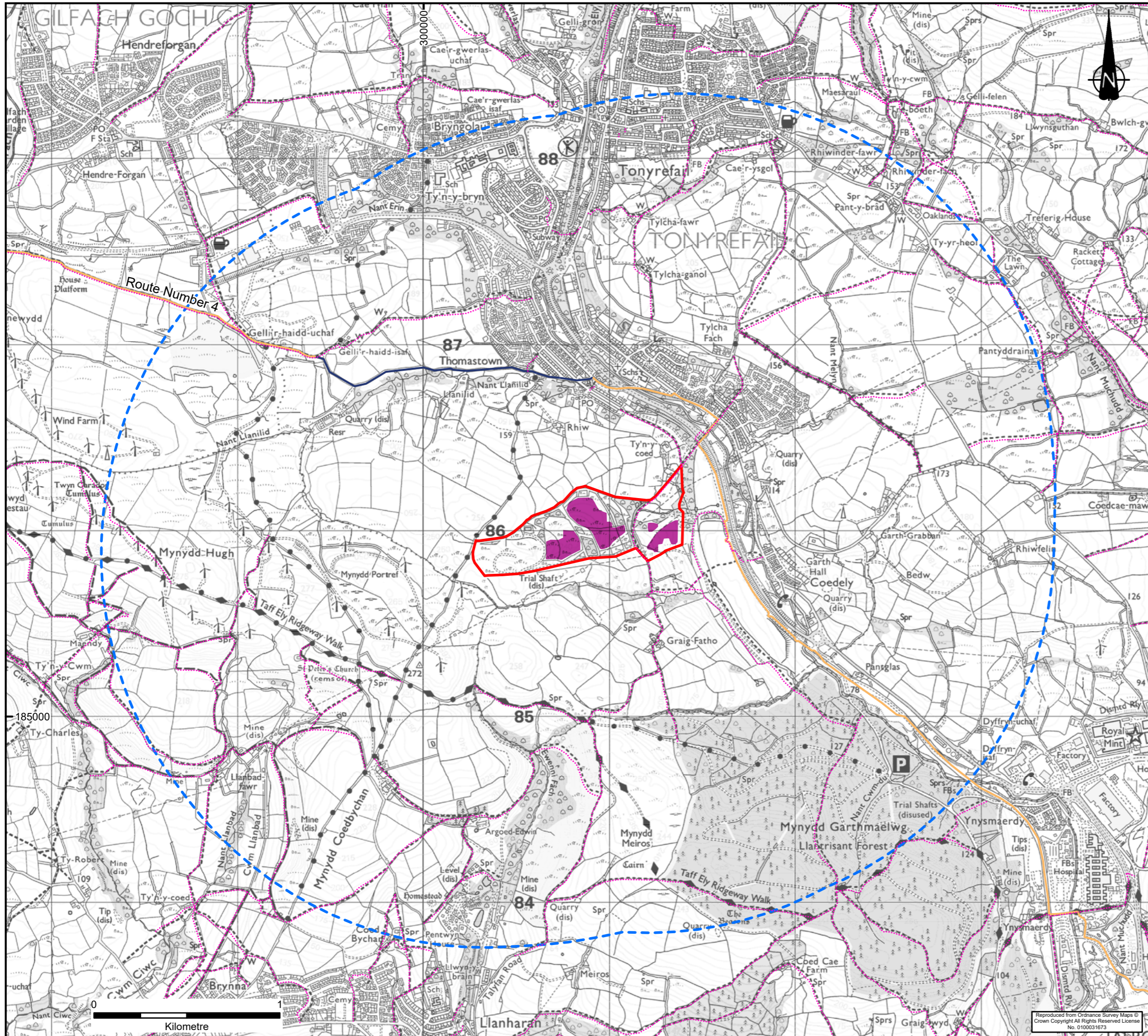
Listed Buildings

- Grade II nationally important and of special interest
- Scheduled Monuments
- Conservation Areas

Notes:
 Boundaries are indicative.
 CADW © Crown Copyright. All rights reserved 2023.

REVISION	DETAILS	DATE	DRAWN	CHKD	APPD
CLIENT					
RHONDDA CYNON TAF COUNTY BOROUGH COUNCIL					
PROJECT					
COED-ELY SOLAR FARM					
DRAWING TITLE					
FIGURE 003 SENSITIVE RECEPTORS					
DRG No.	CA12727/FIGURE003	REV	A		
DRG SIZE	A3	SCALE	1:20,000	DATE	14/06/2023
DRAWN BY	SRW	CHECKED BY	JW	APPROVED BY	LG

Reproduced from Ordnance Survey Maps © Crown Copyright All Rights Reserved License No. 0100031673



KEY

- Site Boundary
- 2 km Buffer
- Solar Array Areas
- National Cycle Network
- On Road
- Traffic Free
- Public Rights of Way

Notes:

Boundaries are indicative.

Rights of Way Data obtained from the Local Authority under the government open data agreement © Crown Copyright. All rights reserved 2023.

Sustrans © Crown Copyright. All rights reserved 2023.

Public Rights of Way not freely available for Bridgend Borough County Council.

REVISION	DETAILS	DATE	DRAWN	CHKD	APPD

CLIENT

RHONDDA CYNON TAF COUNTY BOROUGH COUNCIL

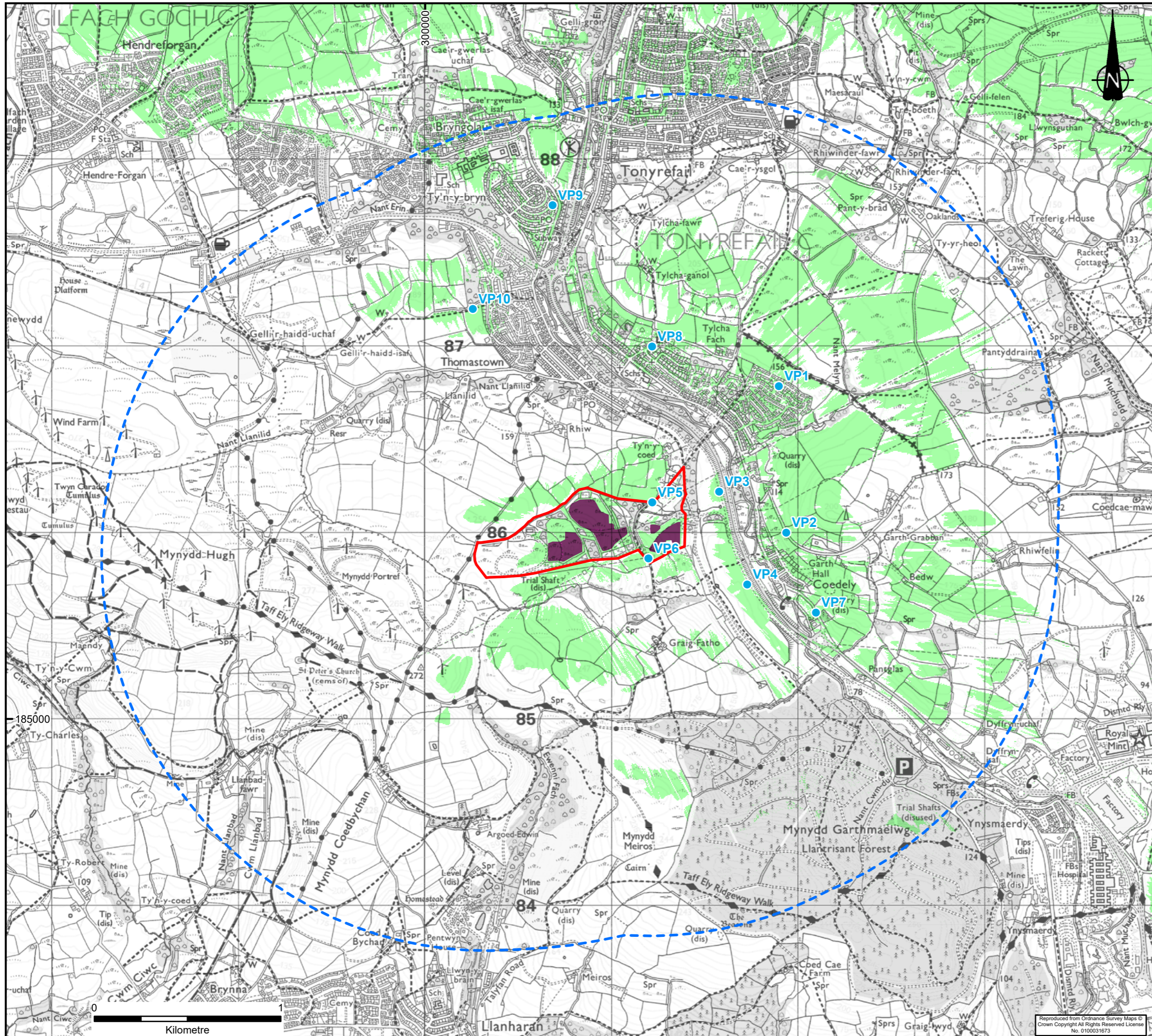
PROJECT

COED-ELY SOLAR FARM

DRAWING TITLE

**FIGURE 004
ACCESS NETWORK**

DRG No.	CA12727/FIGURE004	REV	A
DRG SIZE	A3	SCALE	1:20,000
DRAWN BY	SRW	CHECKED BY	JW
		APPROVED BY	LG



KEY

- Site Boundary
- 2 km Buffer
- Solar Array Areas
- Area where the Proposed Development would be theoretically visible
- Viewpoint Locations

Notes:

Boundaries are indicative.

The ZTV is based on a multi point grid within the solar array areas. Each point is 2.9 m above modelled ground level.

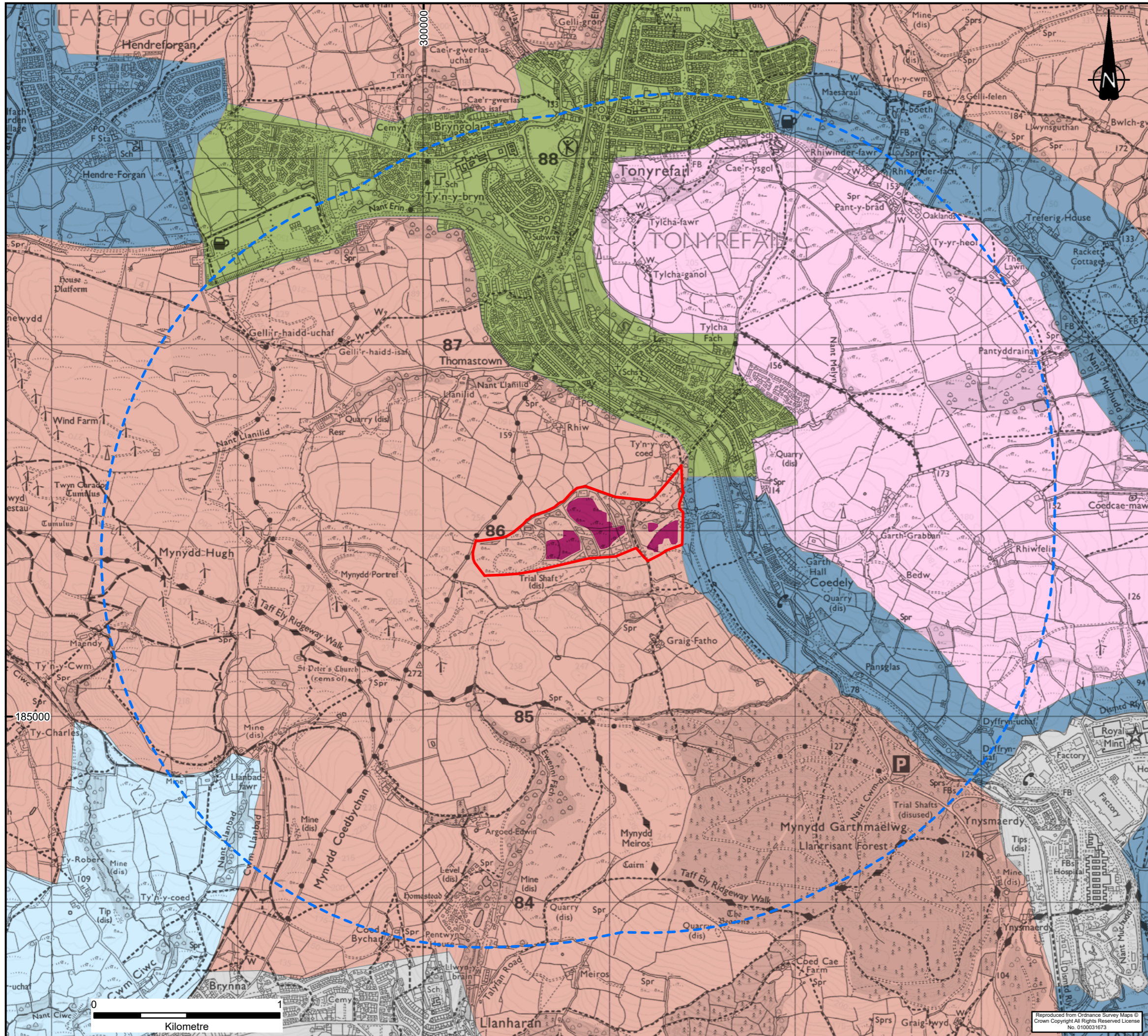
Welsh Government LiDAR DSM (taking into account screening) was used to create the model from which the ZTV was produced

The ZTV takes into account an eye height of 2 m.

The ZTV was created using QGIS Software which takes into account the curvature of the Earth.

REVISION	DETAILS	DATE	DRAWN	CHKD	APPD
CLIENT					
RHONDDA CYNON TAF COUNTY BOROUGH COUNCIL					
PROJECT					
COED-ELY SOLAR FARM					
DRAWING TITLE					
FIGURE 005 ZONE OF THEORETICAL VISIBILITY					
DRG No.	CA12727/FIGURE005	REV	A		
DRG SIZE	A3	SCALE	1:20,000	DATE	14/06/2023
DRAWN BY	SRW	CHECKED BY	JW	APPROVED BY	LG

Reproduced from Ordnance Survey Maps © Crown Copyright All Rights Reserved License No. 0100031673



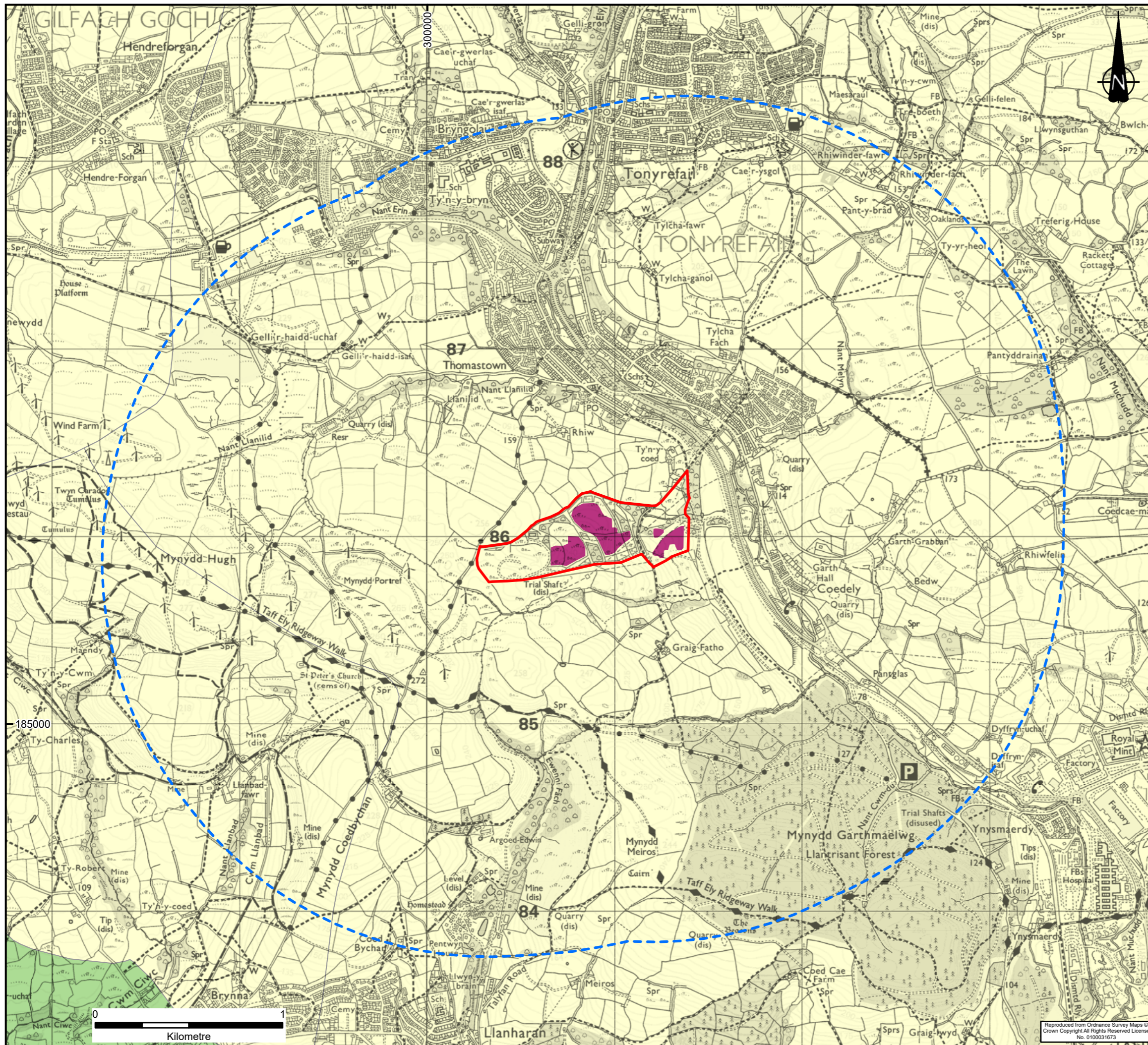
KEY

- Site Boundary
- 2 km Buffer
- Solar Array Areas
- Landmap Cultural Landscape Services
- Hillside & Scarp Slopes Mosaic
- Mosaic Lowland Valleys
- Mosaic Rolling Lowland
- Open Rolling Lowland
- Urban
- Village

Notes:

Boundaries are indicative.
 © Natural Resources Wales. All rights reserved. Crown Copyright and Database Right 2023.

REVISION	DETAILS	DATE	DRAWN	CHKD	APPD
CLIENT					
RHONDDA CYNON TAF COUNTY BOROUGH COUNCIL					
PROJECT					
COED-ELY SOLAR FARM					
DRAWING TITLE					
FIGURE 006 CULTURAL LANDSCAPE					
DRG No.	CA12727/FIGURE006	REV	A		
DRG SIZE	A3	SCALE	1:20,000	DATE	14/06/2023
DRAWN BY	SRW	CHECKED BY	JW	APPROVED BY	LG



KEY

- Site Boundary
- 2 km Buffer
- Solar Array Areas
- Landmap Geological Landscape
- Glacial mountain valley
- Undulating lowland hill terrain

Notes:

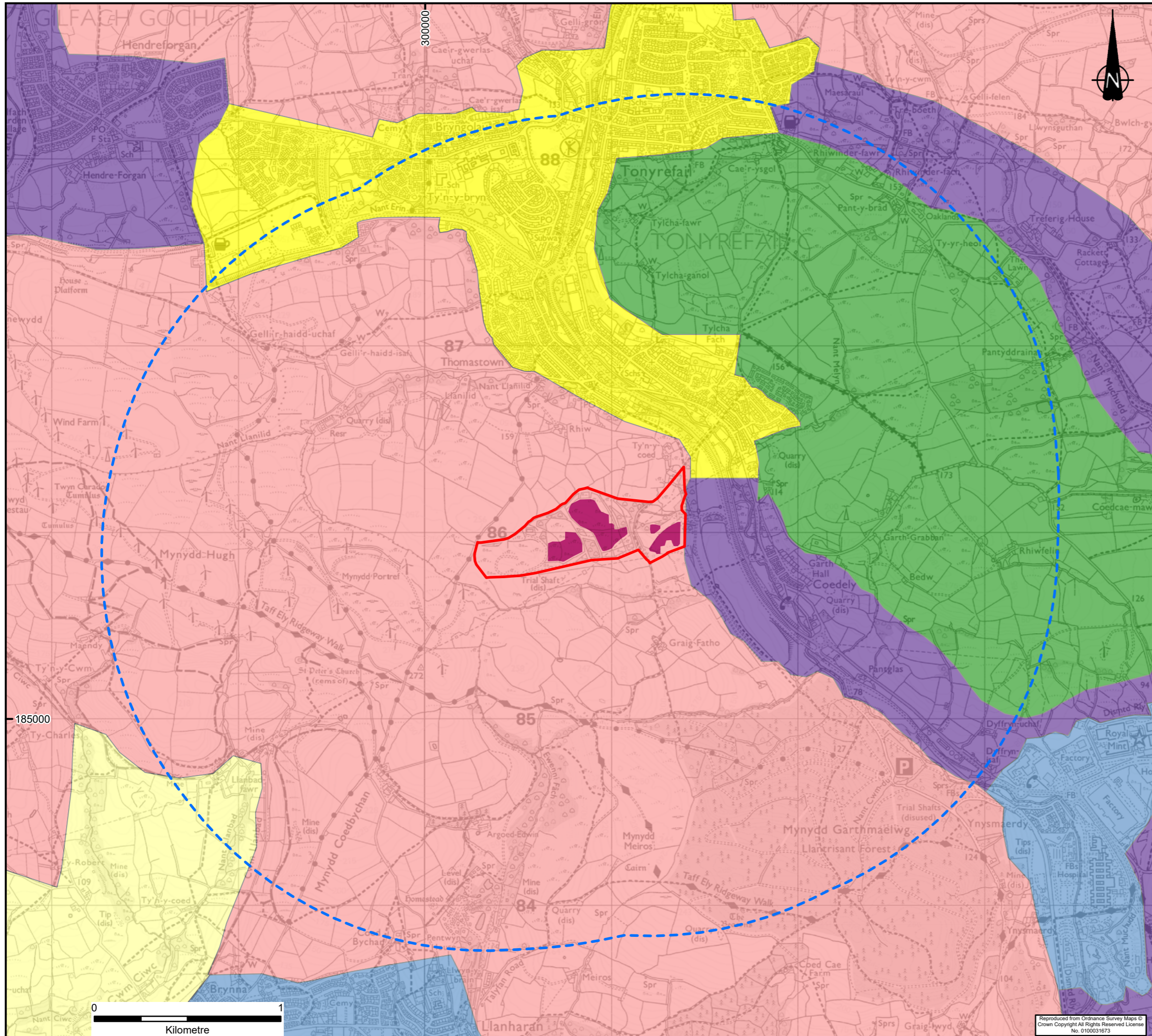
Boundaries are indicative.

© Natural Resources Wales. All rights reserved. Crown Copyright and Database Right 2023.

REVISION	DETAILS	DATE	DRAWN	CHKD	APPD
CLIENT					
RHONDDA CYNON TAF COUNTY BOROUGH COUNCIL					
PROJECT					
COED-ELY SOLAR FARM					
DRAWING TITLE					
FIGURE 007 GEOLOGICAL LANDSCAPE					
DRG No.	CA12727/FIGURE007		REV	A	
DRG SIZE	A3	SCALE	1:20,000	DATE	14/06/2023
DRAWN BY	SRW	CHECKED BY	JW	APPROVED BY	LG



Reproduced from Ordnance Survey Maps © Crown Copyright All Rights Reserved License No. 0100031673



KEY

- Site Boundary
- 2 km Buffer
- Solar Array Areas

Landmap Visual & Sensory Landscape

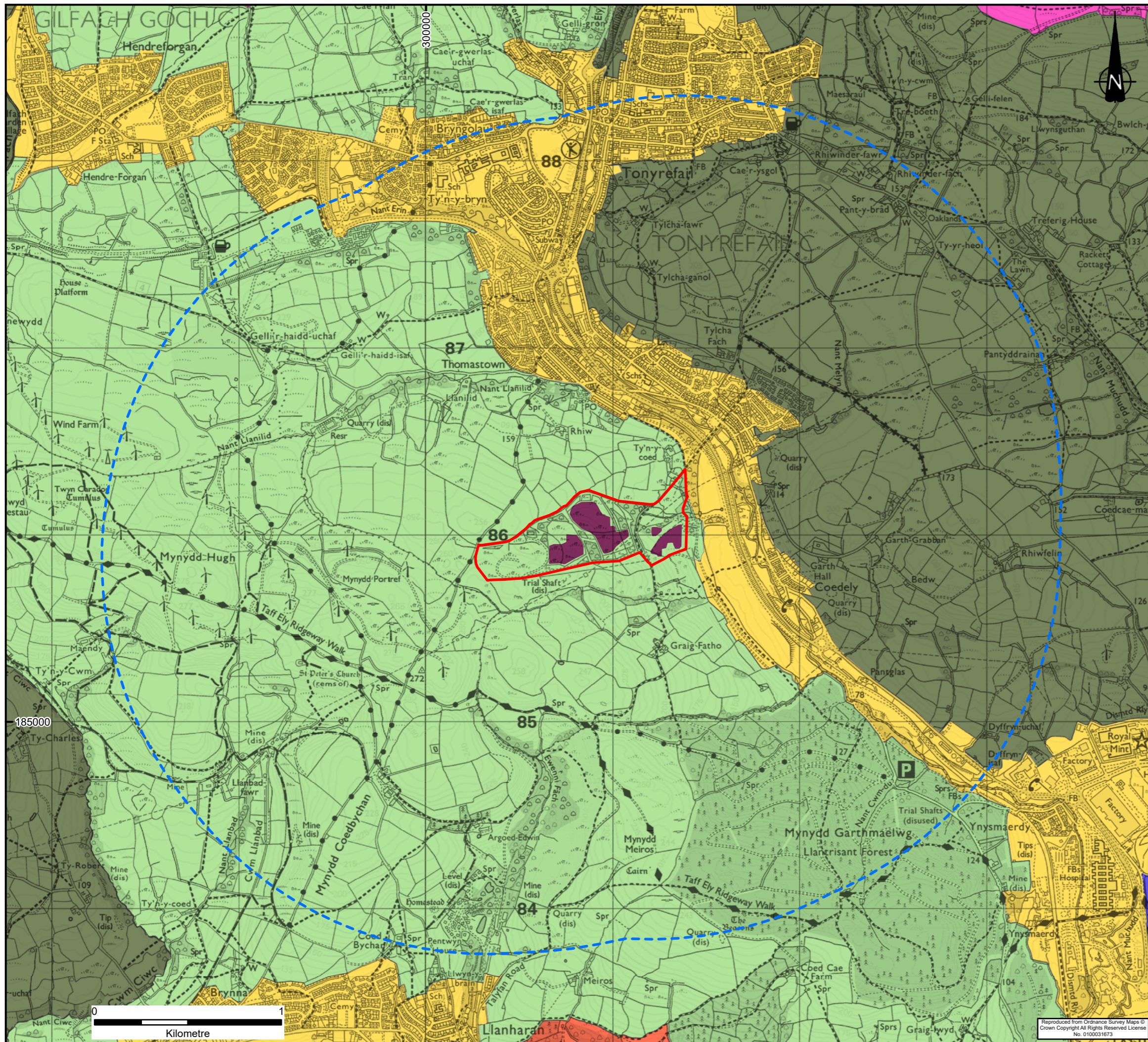
- Hillside & Scarp Slopes Mosaic
- Mosaic Lowland Valleys
- Mosaic Rolling Lowland
- Open Rolling Lowland
- Urban
- Village

Notes:
Boundaries are indicative.

© Natural Resources Wales. All rights reserved. Crown Copyright and Database Right 2023.

REVISION	DETAILS	DATE	DRAWN	CHKD	APPD
CLIENT					
RHONDDA CYNON TAF COUNTY BOROUGH COUNCIL					
PROJECT					
COED-ELY SOLAR FARM					
DRAWING TITLE					
FIGURE 008 VISUAL & SENSORY LANDSCAPE					
DRG No.	CA12727/FIGURE008		REV	A	
DRG SIZE	A3	SCALE	1:20,000	DATE	14/06/2023
DRAWN BY	SRW	CHECKED BY	JW	APPROVED BY	LG

Reproduced from Ordnance Survey Maps © Crown Copyright All Rights Reserved License No. 0100031673



KEY

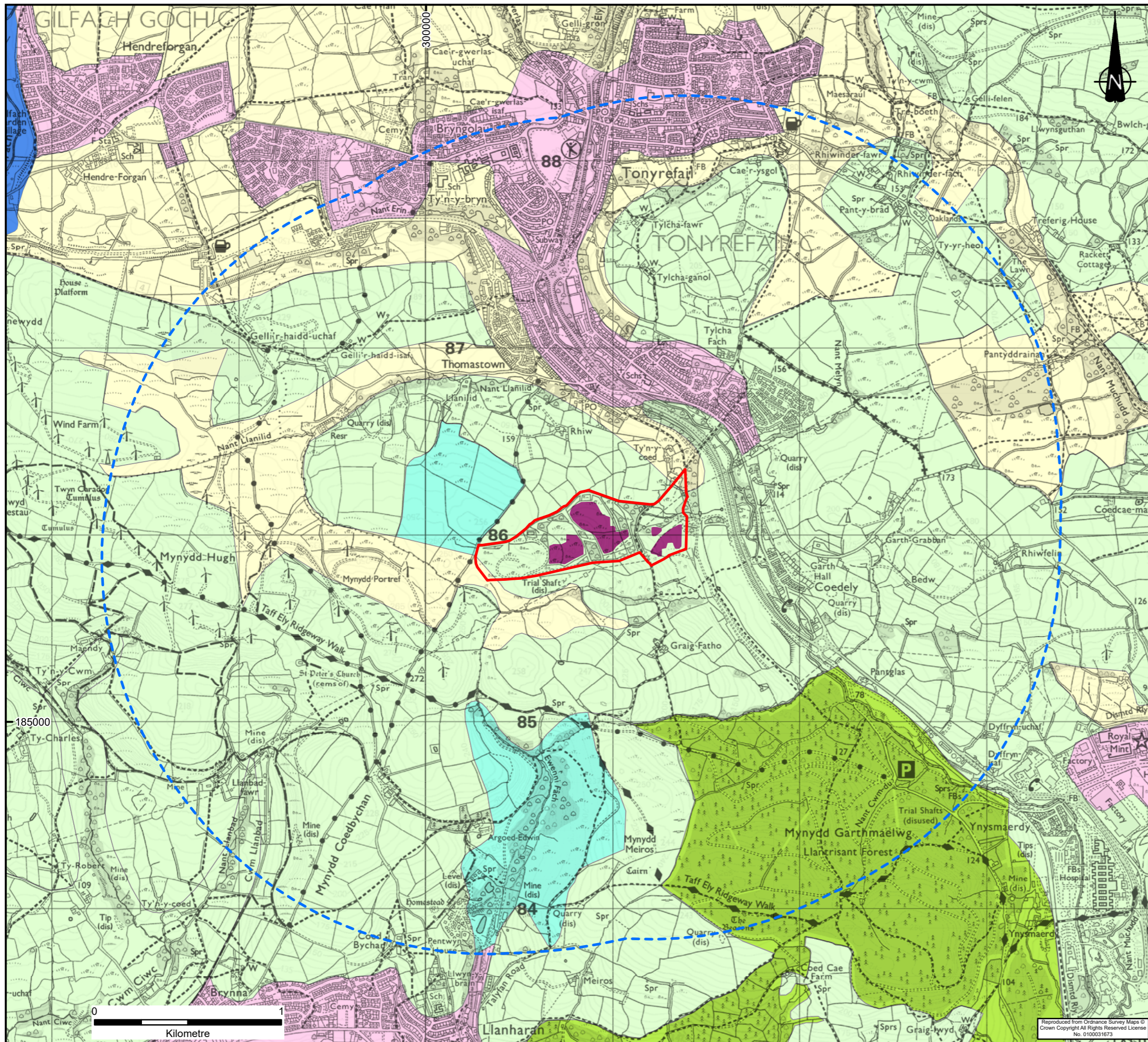
- Site Boundary
- 2 km Buffer
- Solar Array Areas
- Historic Landscape
- Designed
- Irregular Fields
- Marginal Land
- Nucleated Settlement
- Other Settlement
- Regular Fields

Notes:

Boundaries are indicative.
 © Natural Resources Wales. All rights reserved. Crown Copyright and Database Right 2023.

REVISION	DETAILS	DATE	DRAWN	CHKD	APPD
CLIENT					
RHONDDA CYNON TAF COUNTY BOROUGH COUNCIL					
PROJECT					
COED-ELY SOLAR FARM					
DRAWING TITLE					
FIGURE 009 HISTORIC LANDSCAPE					
DRG No.	CA12727/FIGURE009	REV	A		
DRG SIZE	A3	SCALE	1:20,000	DATE	14/06/2023
DRAWN BY	SRW	CHECKED BY	JW	APPROVED BY	LG





KEY

- Site Boundary
- 2 km Buffer
- Solar Array Areas
- Landmap Landscape Habitats
- Acid Grassland
- Broadleaved Woodland
- Coniferous Woodland
- Improved Grassland
- Mosaic
- Residential/Green Space

Notes:

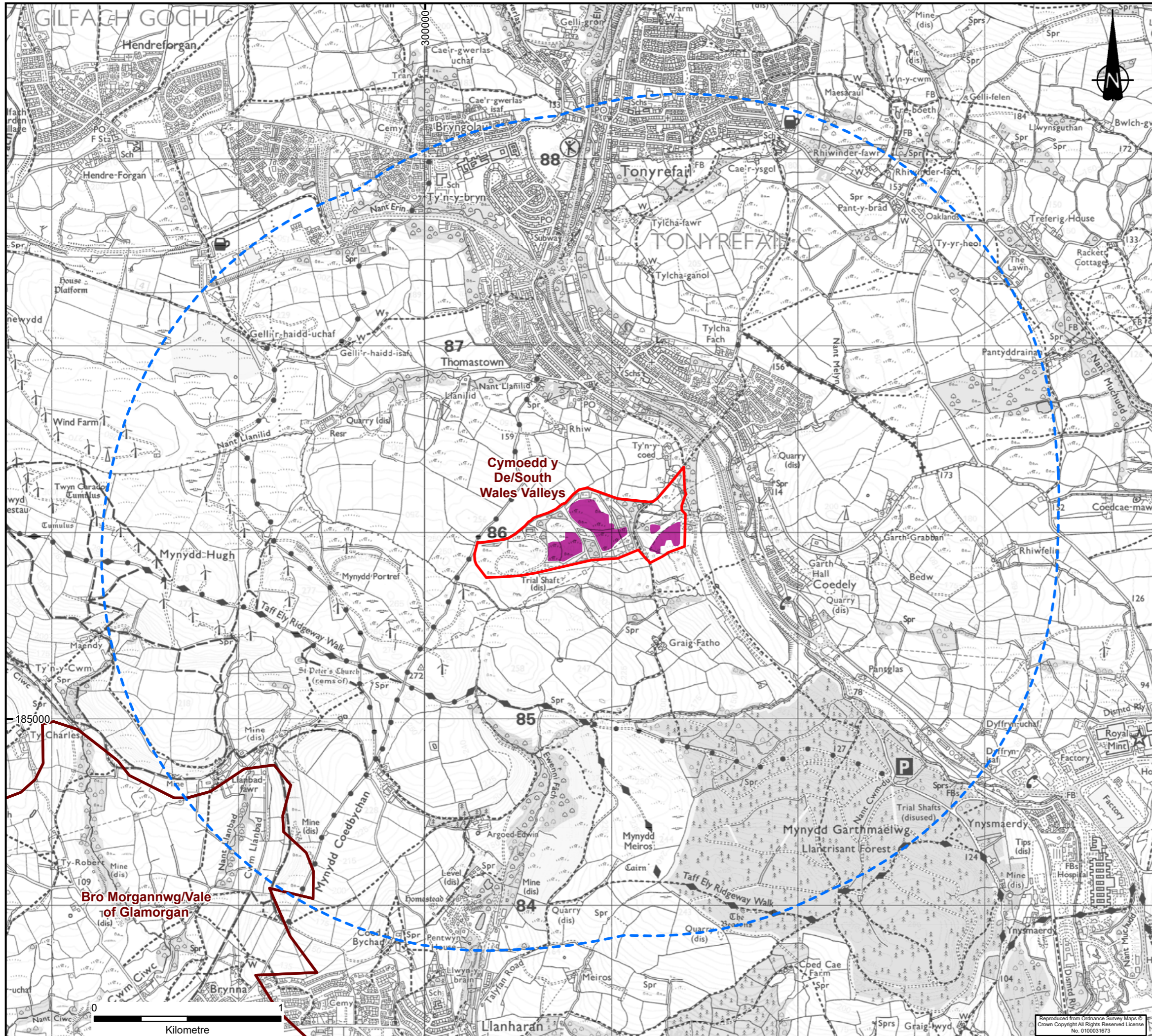
Boundaries are indicative.

© Natural Resources Wales. All rights reserved. Crown Copyright and Database Right 2023.

REVISION	DETAILS	DATE	DRAWN	CHKD	APPD
CLIENT					
RHONDDA CYNON TAF COUNTY BOROUGH COUNCIL					
PROJECT					
COED-ELY SOLAR FARM					
DRAWING TITLE					
FIGURE 010 LANDSCAPE HABITATS					
DRG No.	CA12727/FIGURE010		REV	A	
DRG SIZE	A3	SCALE	1:20,000	DATE	14/06/2023
DRAWN BY	SRW	CHECKED BY	JW	APPROVED BY	LG



Reproduced from Ordnance Survey Maps © Crown Copyright All Rights Reserved License No. 0100031673



KEY

- Site Boundary
- 2 km Buffer
- Solar Array Areas
- National Landscape Character Areas

Notes:
 Boundaries are indicative.
 © Natural Resources Wales. All rights reserved. Crown Copyright and Database Right 2023.

REVISION	DETAILS	DATE	DRAWN	CHKD	APPD

CLIENT
 RHONDDA CYNON TAF COUNTY BOROUGH COUNCIL

PROJECT
 COED-ELY SOLAR FARM

DRAWING TITLE
 FIGURE 011
 NATIONAL LANDSCAPE CHARACTER AREAS

DRG No.	CA12727/FIGURE011	REV	A
DRG SIZE	A3	SCALE	1:20,000
DRAWN BY	SRW	DATE	14/06/2023
CHECKED BY	JW	APPROVED BY	LG





Approximate extent of the site

Visualisation Type	Type 1	Lens Make and Focal Length	Sigma 50mm	Height of Camera Lens	148.7m AOD
Projection	Cylindrical	Horizontal Field of View	90°	Distance to Site Boundary	690m
Enlargement Factor	96%	Vertical Field of View	27°	Viewing Distance	522mm @ A1
Date and Time of Captured Photography	05/03/2023 12:12:00	Direction of View	Southwest		
Camera Make, Model and Sensor Format	Nikon D750	Camera Location (Grid Coordinates)	E301895.8, N186783.89		

Viewpoint Description
View from residential properties north of Coed-Ely

For viewpoint location plan see drawing CA12727-006
Photograph used is a composite panoramic image
Refer to main document appendix for methodology statement

Viewpoint	1	Dwg No	CA12727-015a	Date	12.05.23
Drawn By	YX	Checked By	LG	Approved By	LG

CLIENT	HYDROCK CONSULTANTS LIMITED
PROJECT	COED-ELY SOLAR FARM
DRAWING TITLE	VIEWPOINT 1 BASELINE PANORAMA





Visualisation Type	Type 4	Lens Make and Focal Length	Sigma 50mm	Height of Camera Lens	148.7m AOD
Projection	Cylindrical	Horizontal Field of View	90°	Distance to Site Boundary	690m
Enlargement Factor	96%	Vertical Field of View	27°	Viewing Distance	522mm @ A1
Date and Time of Captured Photography	05/03/2023 12:12:00	Direction of View	Southwest		
Camera Make, Model and Sensor Format	Nikon D750	Camera Location (Grid Coordinates)	E301895.8, N186783.89		

Viewpoint Description
View from residential properties north of Coed-Ely

For viewpoint location plan see drawing CA12727-006
Photograph used is a composite panoramic image
Refer to main document appendix for methodology statement

Viewpoint	1	Drg No	CA12727-015b	Date	08.06.23
Drawn By	AB	Checked By	LG	Approved By	LG



CLIENT	HYDROCK CONSULTANTS LIMITED
PROJECT	COED ELY SOLAR FARM
DRAWING TITLE	VIEWPOINT 1 PROPOSED VIEW ON COMPLETION



Visualisation Type	Type 4	Lens Make and Focal Length	Sigma 50mm	Height of Camera Lens	148.7m AOD
Projection	Cylindrical	Horizontal Field of View	90°	Distance to Site Boundary	690m
Enlargement Factor	96%	Vertical Field of View	27°	Viewing Distance	522mm @ A1
Date and Time of Captured Photography	05/03/2023 12:12:00	Direction of View	Southwest		
Camera Make, Model and Sensor Format	Nikon D750	Camera Location (Grid Coordinates)	E301895.8, N186783.89		

Viewpoint Description	View from residential properties north of Coed-Ely
For viewpoint location plan see drawing	CA12727-006
Photograph used is a composite panoramic image	
Refer to main document appendix for methodology statement	

Viewpoint	1	Drg No	CA12727-015c	Date	08.06.23
Drawn By	AB	Checked By	LG	Approved By	LG

CLIENT	HYDROCK CONSULTANTS LIMITED
PROJECT	COED ELY SOLAR FARM
DRAWING TITLE	VIEWPOINT 1 PROPOSED VIEW 10 YEARS AFTER COMPLETION



Approximate extent of the site



Visualisation Type	Type 1	Lens Make and Focal Length	Sigma 50mm	Height of Camera Lens	141.8m AOD
Projection	Cylindrical	Horizontal Field of View	90°	Distance to Site Boundary	565.2m
Enlargement Factor	96%	Vertical Field of View	27°	Viewing Distance	522mm @ A1
Date and Time of Captured Photography	05/03/2023 11:46:00	Direction of View	West		
Camera Make, Model and Sensor Format	Nikon D750	Camera Location (Grid Coordinates)	E301935.59, N185998.51		



Viewpoint Description
View from track to the east of Coed-Ely

For viewpoint location plan see drawing CA12727-006
Photograph used is a composite panoramic image
Refer to main document appendix for methodology statement

Viewpoint	2	Dwg No	CA12727-016	Date	12.05.23
Drawn By	YX	Checked By	LG	Approved By	LG

CLIENT	HYDROCK CONSULTANTS LIMITED
PROJECT	COED-ELY SOLAR FARM
DRAWING TITLE	VIEWPOINT 2 BASELINE PANORAMA





Approximate extent of the site

Visualisation Type	Type 1	Lens Make and Focal Length	Sigma 50mm	Height of Camera Lens	104.6m AOD
Projection	Cylindrical	Horizontal Field of View	90°	Distance to Site Boundary	169.2m
Enlargement Factor	96%	Vertical Field of View	27°	Viewing Distance	522mm @ A1
Date and Time of Captured Photography	05/03/2023 11:08:00	Direction of View	West		
Camera Make, Model and Sensor Format	Nikon D750	Camera Location (Grid Coordinates)	E301575.86, N186218.37		

Viewpoint Description
View from land previously occupied by the Coed-ely Colliery

For viewpoint location plan see drawing CA12727-006
Photograph used is a composite panoramic image
Refer to main document appendix for methodology statement

Viewpoint	3	Drg No	CA12727-017	Date	12.05.23
Drawn By	YX	Checked By	LG	Approved By	LG

CLIENT	HYDROCK CONSULTANTS LIMITED
PROJECT	COED ELY SOLAR FARM
DRAWING TITLE	VIEWPOINT 3 BASELINE PANORAMA





Approximate extent of the site

Visualisation Type	Type 1	Lens Make and Focal Length	Sigma 50mm	Height of Camera Lens	98.5m AOD
Projection	Cylindrical	Horizontal Field of View	90°	Distance to Site Boundary	406.3m
Enlargement Factor	96%	Vertical Field of View	27°	Viewing Distance	522mm @ A1
Date and Time of Captured Photography	05/03/2023 11:25:00	Direction of View	Northwest		
Camera Make, Model and Sensor Format	Nikon D750	Camera Location (Grid Coordinates)	E301726.31, N185720.8		

Viewpoint Description
 View from PRoW to south east of site,
 on land previously occupied by the Coed-ely Colliery

For viewpoint location plan see drawing CA12727-006
 Photograph used is a composite panoramic image
 Refer to main document appendix for methodology statement

Viewpoint	4	Drg No	CA12727-018	Date	12.05.23
Drawn By	YX	Checked By	LG	Approved By	LG

CLIENT	HYDROCK CONSULTANTS LIMITED
PROJECT	COED ELY SOLAR FARM
DRAWING TITLE	VIEWPOINT 4 BASELINE PANORAMA





Visualisation Type	Type 1	Lens Make and Focal Length	Sigma 50mm	Height of Camera Lens	144.3m AOD
Projection	Cylindrical	Horizontal Field of View	90°	Distance to Site Boundary	10.69m
Enlargement Factor	96%	Vertical Field of View	27°	Viewing Distance	522mm @ A1
Date and Time of Captured Photography	05/03/2023 10:16:00	Direction of View	East		
Camera Make, Model and Sensor Format	Nikon D750	Camera Location (Grid Coordinates)	E301217.35, N186160.81		

Viewpoint Description
 View from PRoW from the northern boundary of the site

For viewpoint location plan see drawing CA12727-006
 Photograph used is a composite panoramic image
 Refer to main document appendix for methodology statement

Viewpoint	5a	Drg No	CA12727-019	Date	12.05.23
Drawn By	YX	Checked By	LG	Approved By	LG

CLIENT	HYDROCK CONSULTANTS LIMITED
PROJECT	COED ELY SOLAR FARM
DRAWING TITLE	VIEWPOINT 5a BASELINE PANORAMA





Visualisation Type	Type 1	Lens Make and Focal Length	Sigma 50mm	Height of Camera Lens	144.3m AOD
Projection	Cylindrical	Horizontal Field of View	90°	Distance to Site Boundary	10.69m
Enlargement Factor	96%	Vertical Field of View	27°	Viewing Distance	522mm @ A1
Date and Time of Captured Photography	05/03/2023 10:16:00	Direction of View	South		
Camera Make, Model and Sensor Format	Nikon D750	Camera Location (Grid Coordinates)	E301217.35, N186160.81		

Viewpoint Description
 View from PRoW from the northern boundary of the site

For viewpoint location plan see drawing CA12727-006
 Photograph used is a composite panoramic image
 Refer to main document appendix for methodology statement

Viewpoint	5	Dwg No	CA12727-019	Date	12.05.23
Drawn By	YX	Checked By	LG	Approved By	LG

CLIENT	HYDROCK CONSULTANTS LIMITED
PROJECT	COED ELY SOLAR FARM
DRAWING TITLE	VIEWPOINT 5b BASELINE PANORAMA





Approximate extent of the site

Visualisation Type	Type 1	Lens Make and Focal Length	Sigma 50mm	Height of Camera Lens	163.7m AOD
Projection	Cylindrical	Horizontal Field of View	90°	Distance to Site Boundary	5.06m
Enlargement Factor	96%	Vertical Field of View	27°	Viewing Distance	522mm @ A1
Date and Time of Captured Photography	05/03/2023 10:49:00	Direction of View	North		
Camera Make, Model and Sensor Format	Nikon D750	Camera Location (Grid Coordinates)	E301196.63, N185860.61		

Viewpoint Description
View from PRoW from the southern boundary of the site facing north west

For viewpoint location plan see drawing CA12727-006
Photograph used is a composite panoramic image
Refer to main document appendix for methodology statement

Viewpoint	6a	Drg No	CA12727-020	Date	12.05.23
Drawn By	YX	Checked By	LG	Approved By	LG

CLIENT	HYDROCK CONSULTANTS LIMITED
PROJECT	COED ELY SOLAR FARM
DRAWING TITLE	VIEWPOINT 6A BASELINE PANORAMA





Approximate extent of the site

Visualisation Type	Type 1	Lens Make and Focal Length	Sigma 50mm	Height of Camera Lens	163.7m AOD
Projection	Cylindrical	Horizontal Field of View	90°	Distance to Site Boundary	5.06m
Enlargement Factor	96%	Vertical Field of View	27°	Viewing Distance	522mm @ A1
Date and Time of Captured Photography	05/03/2023 10:49:00	Direction of View	North		
Camera Make, Model and Sensor Format	Nikon D750	Camera Location (Grid Coordinates)	E301196.63, N185860.61		

Viewpoint Description
 View from PRoW from the southern boundary of the site facing north east

For viewpoint location plan see drawing CA12727-006
 Photograph used is a composite panoramic image
 Refer to main document appendix for methodology statement

Viewpoint	6b	Drg No	CA12727-020a	Date	12.05.23
Drawn By	YX	Checked By	LG	Approved By	LG

CLIENT	HYDROCK CONSULTANTS LIMITED
PROJECT	COED ELY SOLAR FARM
DRAWING TITLE	VIEWPOINT 6B BASELINE PANORAMA





Visualisation Type	Type 4	Lens Make and Focal Length	Sigma 50mm	Height of Camera Lens	163.7m AOD
Projection	Cylindrical	Horizontal Field of View	90°	Distance to Site Boundary	5.06m
Enlargement Factor	96%	Vertical Field of View	27°	Viewing Distance	522mm @ A1
Date and Time of Captured Photography	05/03/2023 10:49:00	Direction of View	North		
Camera Make, Model and Sensor Format	Nikon D750	Camera Location (Grid Coordinates)	E301196.63, N185860.61		

Viewpoint Description
 View from PRoW from the southern boundary of the site facing north east

For viewpoint location plan see drawing CA12727-006
 Photograph used is a composite panoramic image
 Refer to main document appendix for methodology statement

Viewpoint	6b	Drg No	CA12727-020b	Date	08.06.23
Drawn By	AB	Checked By	LG	Approved By	LG

CLIENT	HYDROCK CONSULTANTS LIMITED
PROJECT	COED ELY SOLAR FARM
DRAWING TITLE	VIEWPOINT 6B PROPOSED VIEW ON COMPLETION





Visualisation Type	Type 4	Lens Make and Focal Length	Sigma 50mm	Height of Camera Lens	163.7m AOD
Projection	Cylindrical	Horizontal Field of View	90°	Distance to Site Boundary	5.06m
Enlargement Factor	96%	Vertical Field of View	27°	Viewing Distance	522mm @ A1
Date and Time of Captured Photography	05/03/2023 10:49:00	Direction of View	North		
Camera Make, Model and Sensor Format	Nikon D750	Camera Location (Grid Coordinates)	E301196.63, N185860.61		

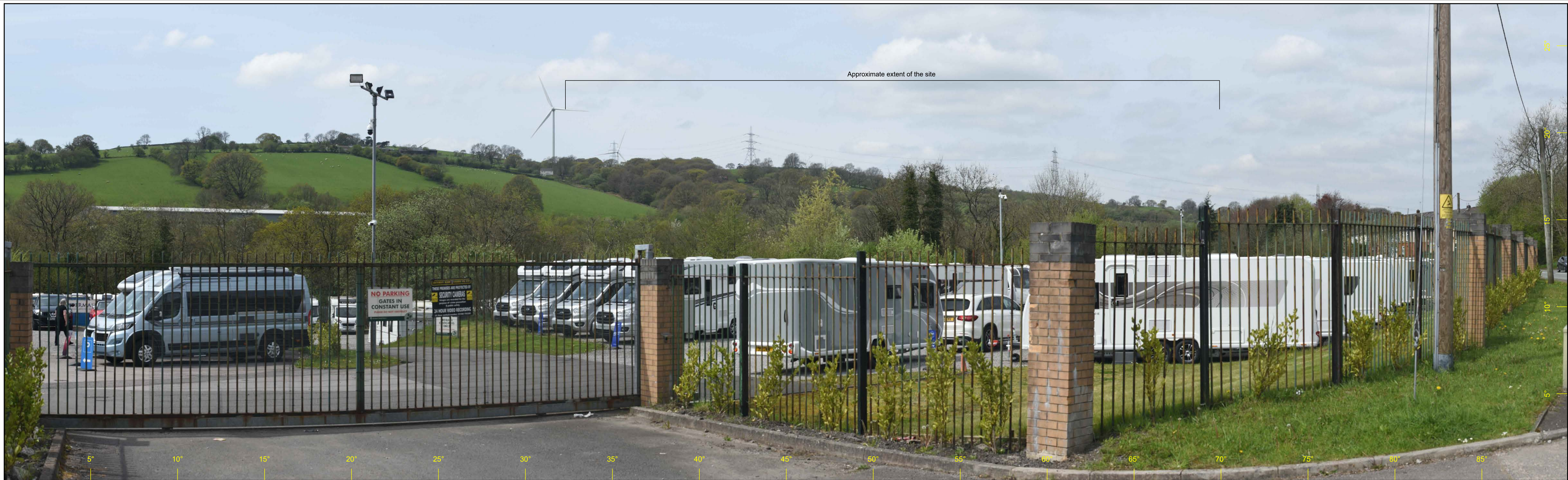
Viewpoint Description
 View from PRoW from the southern boundary of the site facing north east

For viewpoint location plan see drawing CA12727-006
 Photograph used is a composite panoramic image
 Refer to main document appendix for methodology statement

Viewpoint	6b	Drg No	CA12727-020c	Date	08.06.23
Drawn By	AB	Checked By	LG	Approved By	LG

CLIENT	HYDROCK CONSULTANTS LIMITED
PROJECT	COED ELY SOLAR FARM
DRAWING TITLE	VIEWPOINT 6B PROPOSED VIEW 10YEARS AFTER COMPLETION





Approximate extent of the site

Visualisation Type	Type 1	Lens Make and Focal Length	Sigma 50mm	Height of Camera Lens	94.3m AOD
Projection	Cylindrical	Horizontal Field of View	90°	Distance to Site Boundary	797.69m
Enlargement Factor	96%	Vertical Field of View	27°	Viewing Distance	522mm @ A1
Date and Time of Captured Photography	05/03/2023 11:59:00	Direction of View	Northwest		
Camera Make, Model and Sensor Format	Nikon D750	Camera Location (Grid Coordinates)	E302094.73, N185569.98		

--

Viewpoint Description
 View from Ely Valley road south east of the site

For viewpoint location plan see drawing CA12727-006
 Photograph used is a composite panoramic image
 Refer to main document appendix for methodology statement

Viewpoint	7	Dwg No	CA12727-021	Date	12.05.23
Drawn By	YX	Checked By	LG	Approved By	LG
					

CLIENT	HYDROCK CONSULTANTS LIMITED
PROJECT	COED ELY SOLAR FARM
DRAWING TITLE	VIEWPOINT 7 BASELINE PANORAMA



Approximate extent of the site

Visualisation Type	Type 1	Lens Make and Focal Length	Sigma 50mm	Height of Camera Lens	130.5m AOD
Projection	Cylindrical	Horizontal Field of View	90°	Distance to Site Boundary	830.2m
Enlargement Factor	96%	Vertical Field of View	27°	Viewing Distance	522mm @ A1
Date and Time of Captured Photography	05/03/2023 12:27:00	Direction of View	South		
Camera Make, Model and Sensor Format	Nikon D750	Camera Location (Grid Coordinates)	E301216.32, N186996.52		



Viewpoint Description
 View from residential properties north west of Coed-Ely

For viewpoint location plan see drawing CA12727-006
 Photograph used is a composite panoramic image
 Refer to main document appendix for methodology statement

Viewpoint	8	Drg No	CA12727-022	Date	12.05.23
Drawn By	YX	Checked By	LG	Approved By	LG

CLIENT	HYDROCK CONSULTANTS LIMITED
PROJECT	COED ELY SOLAR FARM
DRAWING TITLE	VIEWPOINT 8 BASELINE PANORAMA





Approximate extent of the site

Visualisation Type	Type 1	Lens Make and Focal Length	Sigma 50mm	Height of Camera Lens	130.9m AOD
Projection	Cylindrical	Horizontal Field of View	90°	Distance to Site Boundary	1554.1m
Enlargement Factor	96%	Vertical Field of View	27°	Viewing Distance	522mm @ A1
Date and Time of Captured Photography	05/03/2023 12:49:00	Direction of View	South		
Camera Make, Model and Sensor Format	Nikon D750	Camera Location (Grid Coordinates)	E300683.05, N187754.24		

Viewpoint Description
View from residential properties south of Tonyrefail

For viewpoint location plan see drawing CA12727-006
Photograph used is a composite panoramic image
Refer to main document appendix for methodology statement

Viewpoint	9	Drg No	CA12727-023	Date	12.05.23
Drawn By	YX	Checked By	LG	Approved By	LG

CLIENT	HYDROCK CONSULTANTS LIMITED
PROJECT	COED ELY SOLAR FARM
DRAWING TITLE	VIEWPOINT 9 BASELINE PANORAMA





Approximate extent of the site

Visualisation Type	Type 1	Lens Make and Focal Length	Sigma 50mm	Height of Camera Lens	155.8m AOD
Projection	Cylindrical	Horizontal Field of View	90°	Distance to Site Boundary	1148.8m
Enlargement Factor	96%	Vertical Field of View	27°	Viewing Distance	522mm @ A1
Date and Time of Captured Photography	05/03/2023 13:12:00	Direction of View	South		
Camera Make, Model and Sensor Format	Nikon D750	Camera Location (Grid Coordinates)	E300255.36, N187198.01		

Viewpoint Description
 View from residential properties west of Thomastown

For viewpoint location plan see drawing CA12727-006
 Photograph used is a composite panoramic image
 Refer to main document appendix for methodology statement

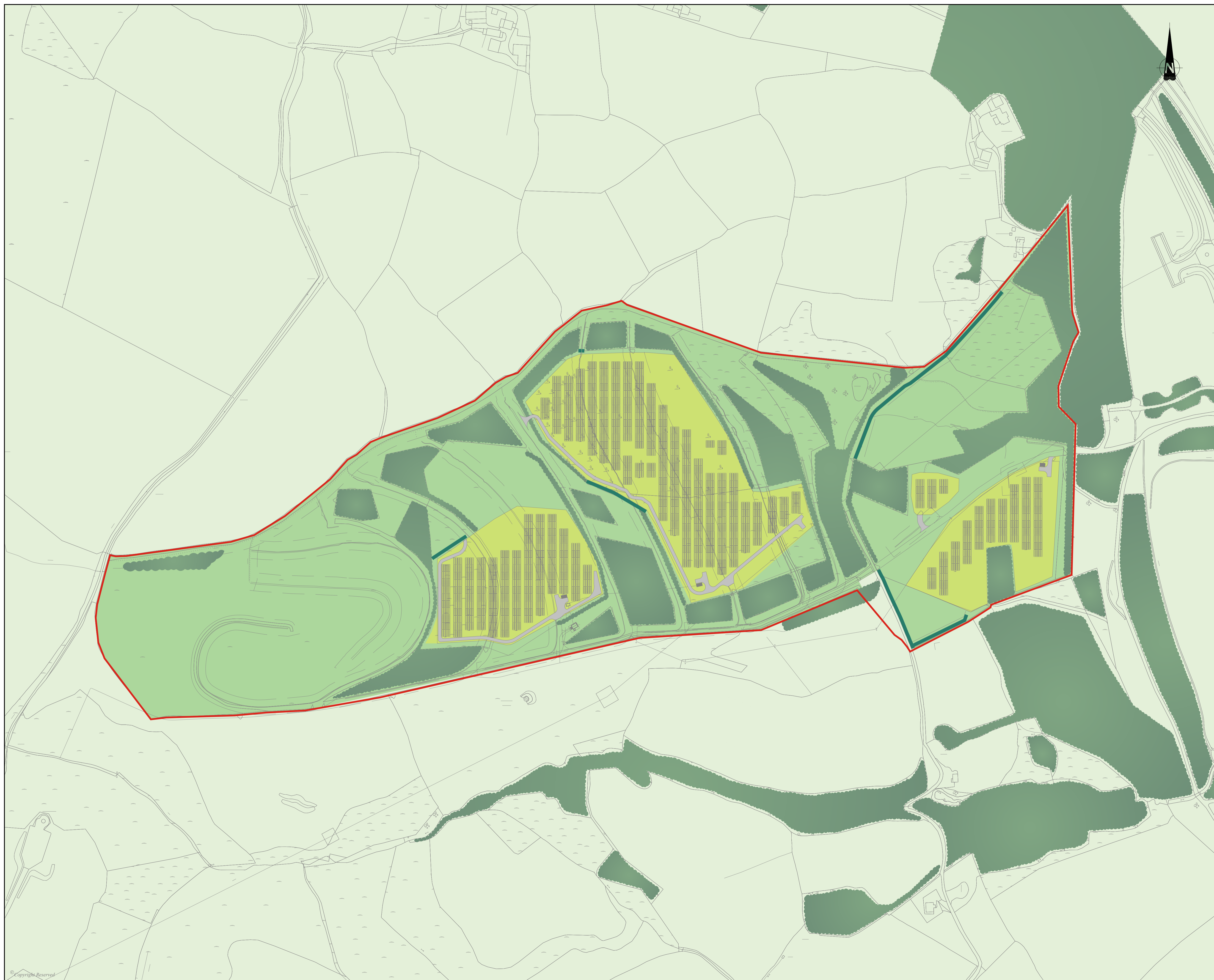
Viewpoint	10	Drg No	CA12727-024	Date	12.05.23
Drawn By	YX	Checked By	LG	Approved By	LG
					



CLIENT	HYDROCK CONSULTANTS LIMITED
PROJECT	COED ELY SOLAR FARM
DRAWING TITLE	VIEWPOINT 10 BASELINE PANORAMA

DO NOT SCALE FROM THIS DRAWING

KEY

- Existing Grassland Enhancement
- Existing Grassland Retained
- Existing vegetation
- Proposed hedgerow



REVISION	DETAILS	DATE	DRAWN	CHECKED	APPROVED
CLIENT	RHONDDA CYNON TAF COUNTY BOROUGH COUNCIL				
PROJECT	COED-ELY SOLAR FARM				
DRAWING TITLE	LANDSCAPE STRATEGY				
DRG No.	CA12727/025	REV	-	SUIT CODE	
DRG SIZE	A1	SCALE	1:2,000	DATE	JUNE 2023
DRAWN BY	ZT	CHECKED BY	JW	APPROVED BY	LG
					

STOKE-ON-TRENT

Sir Henry Doulton House
Forge Lane
Etruria
Stoke-on-Trent
ST1 5BD
Tel: +44 (0)1782 276 700

BIRMINGHAM

Two Devon Way
Longbridge Technology Park
Longbridge
Birmingham
B31 2TS
Tel: +44 (0)121 580 0909

BOLTON

41-50 Futura Park
Aspinall Way
Middlebrook
Bolton
BL6 6SU
Tel: +44 (0)1204 227 227

BRISTOL

Temple Studios
Temple Gate
Redcliffe
Bristol
BS1 6QA
Tel: +44 (0)117 203 4477

BURY ST EDMUNDS

Armstrong House
Larmin Road
Bury St Edmunds
Suffolk
IP32 6NU
Tel: +44 (0)1284 765 210

CARDIFF

Tudor House
16 Cathedral Road
Cardiff
CF11 9LJ
Tel: +44 (0)292 072 9191

CARLISLE

Marconi Road
Burgh Road Industrial Estate
Carlisle
Cumbria
CA2 7NA
Tel: +44 (0)1228 550 575

EDINBURGH

Great Michael House
14 Links Place
Edinburgh
EH6 7EZ
Tel: +44 (0)131 555 3311

GLASGOW

24 St Vincent Place
Glasgow
G1 2EU
Tel: +44 (0)141 428 4499

LEEDS

36 Park Row
Leeds
LS1 5JL
Tel: +44 (0)113 831 5533

LONDON

Third Floor
46 Chancery Lane
London
WC2A 1JE
Tel: +44 (0)207 242 3243

NEWCASTLE UPON TYNE

City Quadrant
11 Waterloo Square
Newcastle upon Tyne
NE1 4DP
Tel: +44 (0)191 232 0943

TRURO

Baldhu House
Wheal Jane Earth Science Park
Baldhu
Truro
TR3 6EH
Tel: +44 (0)187 256 0738

International office:

ALMATY

29/6 Satpaev Avenue
Hyatt Regency Hotel
Office Tower
Almaty
Kazakhstan
050040
Tel: +7(727) 334 1310