

Notes

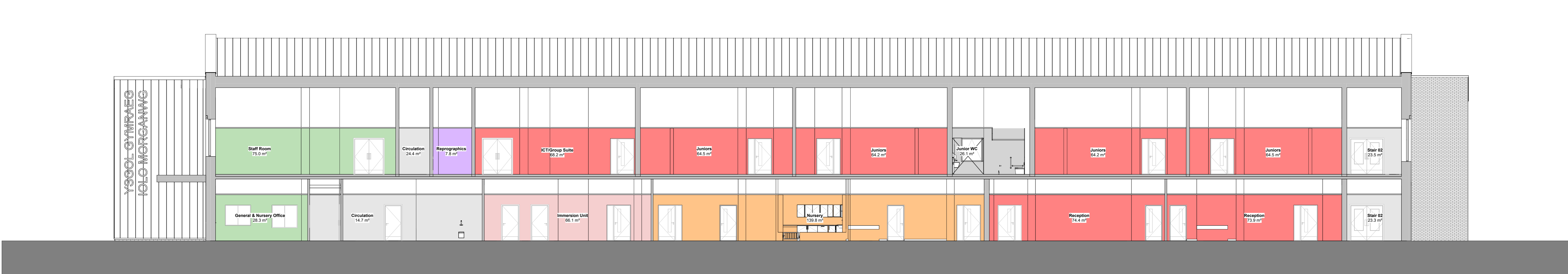
Check all dimensions on site. Do not scale from this drawing.
Report any discrepancies and omissions to HLM Architects
This Drawing is Copyright ©

DESIGN/SKETCH DESIGN
Unless stated otherwise, the designs shown are subject to detailed site survey, investigations, and legal definition, the CDM Regulations, and the comments and / or approval of the various relevant Local Authority Officers, Statutory Undertakers, Fire Officers, Engineers and the like. They are copyright, project specific and confidential and no part is to be used or copied in any way without the express prior consent of HLM Architects.

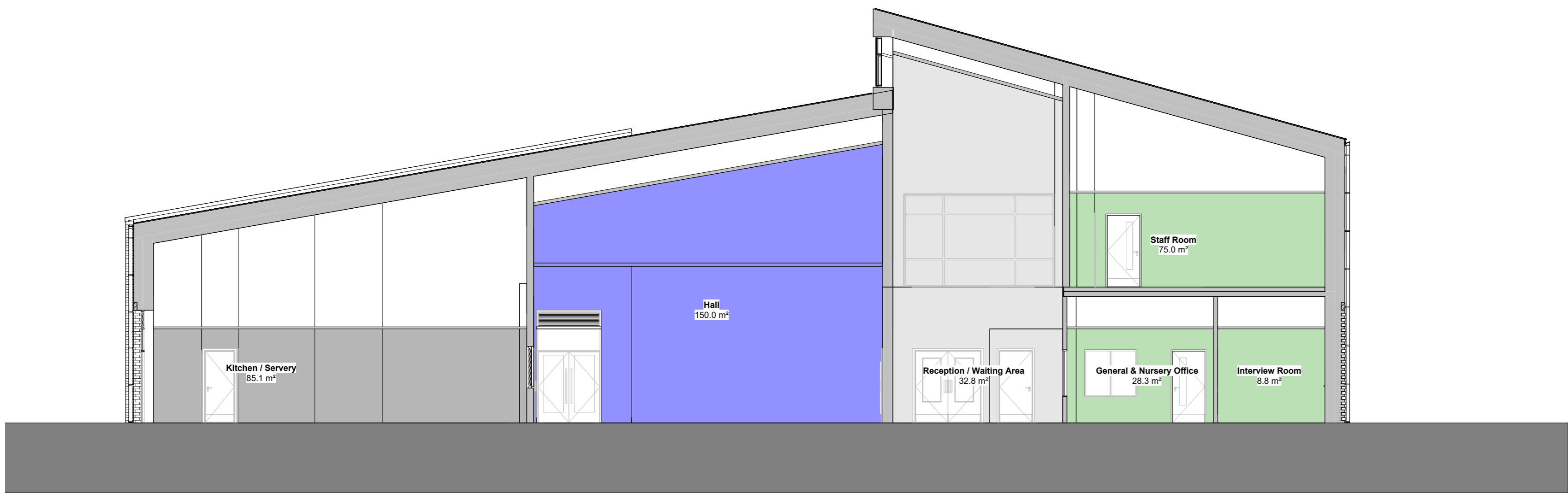
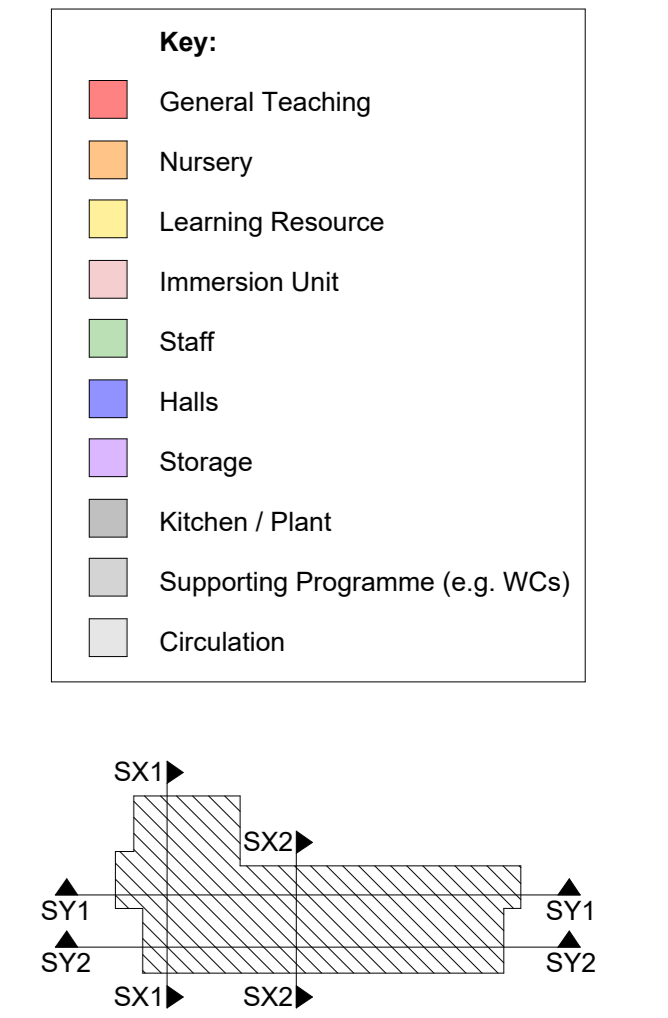
PHOTOCOPIED/SCANNED INFORMATION
NB This drawing is based on photocopied / scanned information liable to distortion in scale.

AREA CALCULATIONS
NB The areas shown are approximate only and have been measured off preliminary drawings as the likely areas at the current state of design using the stated option from the Code of Measuring Practice, 4th edition. RICS/NSA. These may be affected by future design development and construction tolerances, or the result of surveys for existing buildings. Take account of these factors before planning any financial or property development purpose or strategy and seek confirmation of latest areas before decision making.

3RD-PARTY INFORMATION
NB This drawing includes information provided by independent surveyors and/or consultants, to whom all queries shall be made. HLM Architects can accept no liability for its content or accuracy.



Section Y2, Teaching Wing, Coloured
Scale: 1 : 100




Section X1, Entrance / Hall, Coloured
Scale: 1 : 100



Section X2, Teaching Wing, Coloured
Scale: 1 : 100



Section Y1, Hall / Teaching, Coloured
Scale: 1 : 100

P04	Issued for PAC	22/09/2025	SC	NT
P03	Revised Canopy & Entrance Design	21/07/2025	SC	SG
P02	Stage 3 Issue	16/07/2025	NT	SC
P01	Initial Stage 3 Issue	16/07/2025	NT	SC
Rev	Description	Date	By	Chk
Revisions		Suitability		
Project		S3 SUITABLE FOR REVIEW AND COMMENT		
15-1294-01				
Ysgol Iolo Morganwg				
Client				
Vale of Glamorgan Council				
Title				
Coloured Building Sections				
Drawing No.		Revision		
YIM-HLM-01-ZZ-D-A-006400		P04		
Scale		Drawn		
As indicated @AO		NT		
Date		Checked		
10/07/2025		SC		
<div><div></div><div><div>HLM</div><div>Architects</div></div></div>				
© HLM Architects Suite 1b, Hodge House 114-116 St Mary's Street Cardiff, CF10 1DY		www.hlmarchitects.com T. +44 (0) 29 2039 6070 cardiff@hlmarchitects.com		